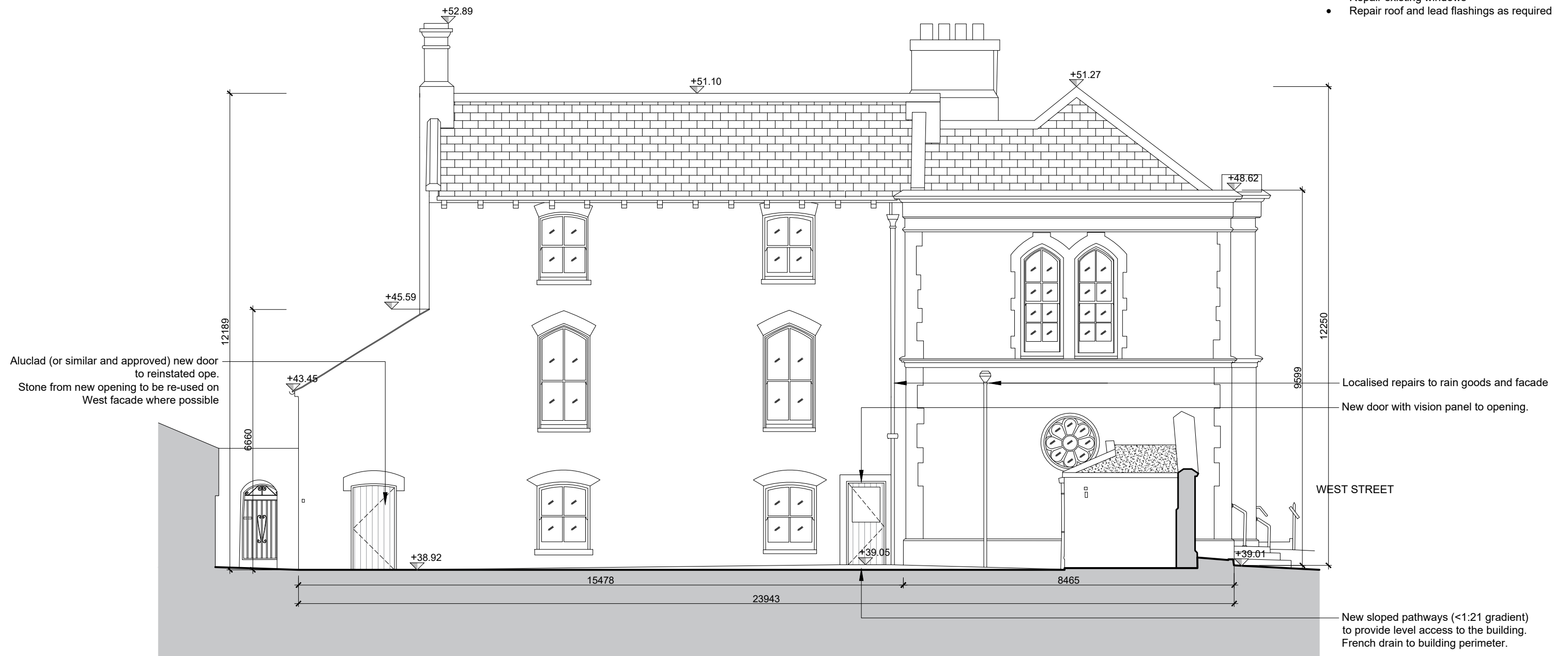



GENERAL:

- Remove redundant aerials to roof and chimneys
- Careful removal of external railings, make good holes to facade / cills
- Careful removal of all Air Conditioning Units and associated cables, make good holes to facade
- Careful removal of external lighting and associated electrical cables
- Repair existing windows
- Repair roof and lead flashings as required



NOTES: Do not scale dimensions, use figured dimensions only. All works to be carried out in strict accordance with current building regulations. Any discrepancies should be reported immediately upon detection.

REV	DATE	DESCRIPTION	BY
P01		Issued for Part 8	WCCC


**Comhairle Cathrach & Contae Phort Láirge**  
 Waterford City & County Council

**PROJECT**  
 Lismore Former Bank of Ireland: Tourist Accommodation

TITLE Proposed East Elevation			
SCALE 1:100 @A3	DATE 02/10/2024	DRAWN BY SO'D	CHECKED WCCC
PROJECT No.	DRAWING No. 1207	REV P.01	#####