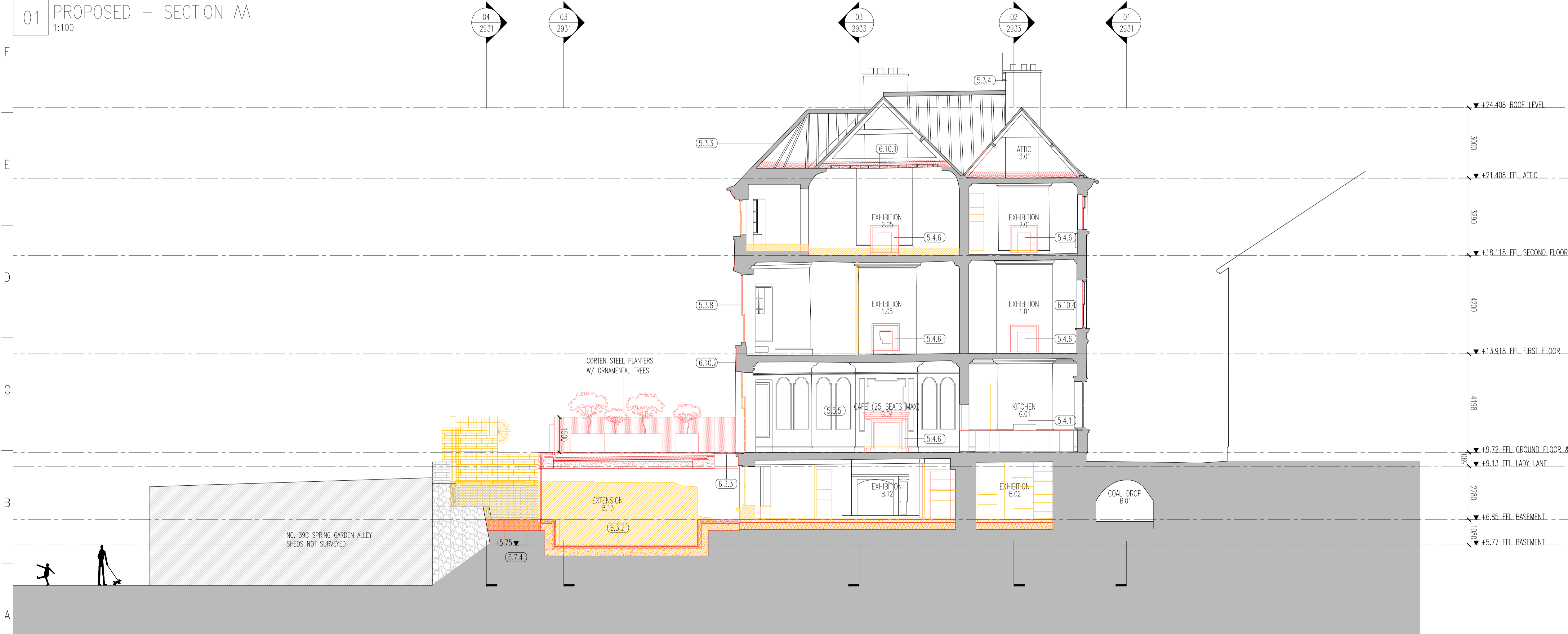


01 PROPOSED - SECTION AA
1:100



02 PROPOSED - SECTION BB
1:100

- PROPOSED ALTERATIONS & REFURBISHMENT WORKS:
(THESE DRAWINGS TO BE READ IN CONJUNCTION WITH ARCHITECTURAL HERITAGE IMPACT ASSESSMENT)
5. METHOD STATEMENT FOR CONSERVATION WORKS
- 5.3 EXTERIOR CONSERVATION WORKS
- 5.3.1 REMOVAL WORKS
 - 5.3.2 SCAFFOLDING AND TEMPORARY WORKS
 - 5.3.3 ROOFING AND RAINWATER GOODS
 - 5.3.4 CHIMNEY REPAIRS
 - 5.3.5 REPAIRS TO FRONT ELEVATION
 - 5.3.6 REPAIRS TO REAR ELEVATION
 - 5.3.7 WINDOW REPAIRS
 - 5.3.8 NEW WINDOWS
 - 5.3.9 EXTERNAL DOORS
 - 5.3.10 EXTERNAL STEPS
- 5.4 INTERNAL WALLS, FLOORS AND CEILINGS
- 5.4.1 MASONRY REPAIRS
 - 5.4.2 FORMATION OF NEW OPENINGS
 - 5.4.3 UNDERPINNING WORKS
 - 5.4.4 LINE PLASTER TO WALLS
 - 5.4.5 DECORATIVE PLASTERWORK TO WALLS
 - 5.4.6 FIREPLACES AND FLUES
 - 5.4.7 INSULATING LINE PLASTER
 - 5.4.8 PAINT FINISHES
 - 5.4.9 SOLID GROUND FLOORS
 - 5.4.10 SUSPENDED TIMBER FLOORS
 - 5.4.11 LATH AND PLASTER CEILINGS AND PARTITIONS
 - 5.4.12 DECORATIVE PLASTERWORK
- 5.5 INTERNAL JOINERY
- 5.5.1 REPAIRS TO MAIN STAIRCASE
 - 5.5.2 REPAIRS TO SERVICE STAIRCASE
 - 5.5.3 INTERNAL DOORS AND ARCHITRAVES
 - 5.5.4 INTERNAL WINDOW SURROUNDS
 - 5.5.5 SKIRTINGS, DADO RAILS, PICTURE RAILS
- 5.6 FIRE PROTECTION MEASURES
- 5.6.1 IMPROVING FIRE RESISTANCE OF DOORS
 - 5.6.2 NEW FIRE DOORS
 - 5.6.3 UNDERFLOOR FIRE BARRIERS
- 5.7 INTEGRATION OF SERVICES
- 5.7.1 CHANGING AND PENETRATIONS TO WALLS
 - 5.7.2 UNDERFLOOR SERVICES
6. IMPACT OF PROPOSED INTERVENTIONS
- 6.1 CONSERVATION STRATEGY
- 6.1.1 RESTORATION OF CHARACTER
 - 6.1.2 THE DESIGN PROPOSAL
 - 6.1.3 EVOLUTION OF THE DESIGN
- 6.2 CHANGE OF USE
- 6.3 REAR EXTENSION
- 6.3.1 ALTERATIONS TO BUILDING FABRIC TO REAR
 - 6.3.2 RAISING OF GARDEN LEVEL AND LOWERING OF EXISTING LEVEL
 - 6.3.3 JUNCTION TO REAR OF HOUSE
 - 6.3.4 EXTERNAL LIFT SHAFT
 - 6.3.5 BOUNDARY WALLS
 - 6.3.6 IMPACT ON HISTORIC CITY WALL
- 6.4 EXTERNAL ALTERATIONS
- 6.4.1 ALTERATIONS TO FRONT ELEVATION
 - 6.4.2 ALTERATION TO REAR ELEVATION
- 6.5 INTERNAL ALTERATIONS
- 6.5.1 PROPOSED INTERNAL CIRCULATION
 - 6.5.2 NEW PLATFORM LIFT AND ASSOCIATED CHANGES AT GROUND AND BASEMENT
 - 6.5.3 NEW PROTECTED STAIR
 - 6.5.4 REPLACEMENT OF NON-HISTORIC BASEMENT STAIR
 - 6.5.5 SANITARY ACCOMMODATION AT BASEMENT LEVEL
 - 6.5.6 NEW AND BLOCKED DOOR OPENINGS
- 6.6 STRUCTURAL INTERVENTIONS
- 6.6.1 STRENGTHENING OF FLOORS
 - 6.6.2 ALTERATIONS TO STEEL STRUCTURES AT BASEMENT LEVEL
 - 6.6.3 REMOVAL OF STRUCTURAL STEEL AT SECOND FLOOR LEVEL
 - 6.6.4 LOCALISED UNDERPINNING
- 6.7 BUILDING SERVICES
- 6.7.1 HEATING VENTILATION AND AIR CONDITIONING
 - 6.7.2 ELECTRICAL AND IT SERVICES
 - 6.7.3 SERVICES DISTRIBUTION
 - 6.7.4 CIVIL SERVICES
- 6.8 FIRE SAFETY INTERVENTIONS
- 6.8.1 STRATEGY FOR MEANS OF ESCAPE
 - 6.8.2 PASSIVE FIRE PROTECTION
 - 6.8.3 FITTINGS TO ENABLE EVACUATION IN EVENT OF FIRE
 - 6.8.4 OTHER MEASURES
 - 6.8.5 PROTECTION FROM FIRE DURING CONSTRUCTION
- 6.9 DISABLED ACCESS INTERVENTIONS
- 6.9.1 STRATEGY FOR PART M COMPLIANCE
 - 6.9.2 FABRIC ALTERATIONS FOR DISABLED ACCESS
- 6.10 THERMAL EFFICIENCY UPGRADES
- 6.10.1 ROOF INSULATION
 - 6.10.2 EXTERNAL INSULATION TO REAR ELEVATION
 - 6.10.3 INSULATING PLASTER TO INTERIOR
 - 6.10.4 SECONDARY GLAZING
- GENERAL NOTES:
- ELECTRONIC PDF FILES TAKE PRECEDENCE - AUTOCAD OR REVIT FILES ARE PROVIDED FOR INFORMATION AND BACKGROUND USE ONLY. IN THE EVENT OF ANY DISCREPANCIES PLEASE ADVISE THE EMPLOYER'S REPRESENTATIVE IMMEDIATELY.
 - ALL DIMENSIONS TO BE CHECKED AND VERIFIED ON SITE PRIOR TO COMMENCEMENT OF THE WORK.
 - ALL DIMENSIONS ARE IN MILLIMETRES UNLESS NOTED.
 - DO NOT SCALE FROM DRAWINGS - ONLY FIGURED DIMENSIONS TO BE USED. DRAWINGS SHOULD NOT BE SCALED EITHER BY HAND OR FROM THE COMPUTER DIGITAL DATA.
 - DISCREPANCIES BETWEEN ARCHITECTURAL, CIVIL, STRUCTURAL MEP AND/OR ANY OTHER DESIGN TEAM MEMBERS' DRAWINGS MUST BE HIGHLIGHTED AND REPORTED TO THE EMPLOYER'S REPRESENTATIVE IMMEDIATELY.
 - THIS DRAWING MUST BE READ IN CONJUNCTION WITH THE RELEVANT ARCHITECTURAL, CIVIL, STRUCTURAL MEP AND/OR ANY OTHER DESIGN TEAM MEMBERS' DRAWINGS & SPECIFICATIONS.
 - REFER TO ARCHITECT'S DRAWINGS FOR ALL FACADE AND FINISHES SET-OUT UNLESS OTHERWISE NOTED. REFER TO STRUCTURAL ENGINEER'S DRAWINGS FOR CONCRETE SET-OUT.
 - REFER TO ARCHITECT'S AND FACADE ENGINEER'S SPECIFICATION FOR INFORMATION ON THE PRODUCTS AND SYSTEMS IDENTIFIED ON THESE DRAWINGS BY A TRS REFERENCE CODE IN THE ALPHANUMERICAL FORMAT (XXX-XXX).
 - GROUND FLOOR LEVEL IS SET AT 0.00 AND ALL OTHER LEVELS ARE SHOWN AS RELATIVE TO THIS.
 - IN CASE OF DISCREPANCIES, LARGER SCALES TAKE PRECEDENCE.
- DATUM LEVEL:
ALL DATUMS ASL (ABOVE SEA LEVEL)
- NOTE: DRAWINGS TO BE READ IN CONJUNCTION WITH ARCHITECTURAL DESIGN STATEMENT
LLW-HPA-00-XX-RP-AA-9904 FOR FURTHER INFORMATION

LEGEND

- REDLINE DEVELOPMENT BOUNDARY
- EXISTING BUILDING FABRIC - SECTION
- CITY WALL
- NEW CONSTRUCTION - PLAN / ELEVATION
- BLOCKWORK
- CONCRETE / LIMESTONE (IN EXISTING BLDG.)
- BRICK (SECTION)
- BRICK
- GRAVEL
- GRADE GLASS BALUSTRADE
- DEMOLITION / REMOVAL - PLAN / ELEVATION
- DEMOLITION / REMOVAL - SECTION

NO.	DATE	REVISION DESCRIPTION
P04_26_0501		PART 8 PLANNING APPLICATION
P03_26_0417		PART 8 PLANNING APPLICATION
P02_26_0304		PART 8 PLANNING APPLICATION
P01_26_0217		PART 8 DRAFT SUBMISSION

CLIENT
WATERFORD TREASURES

PROJECT NAME
18 LADY LANE CHILDREN'S MUSEUM
WATERFORD, X91 VF10

ARCHITECT
heneghan peng architects
44-46 CHARLTON STREET, DUBLIN 2, IRELAND
TEL: 01 454 9191 FAX: 01 454 9192
E-MAIL: heneghanpeng.com

DRAWING TITLE
PROPOSED SECTIONS AA & BB

ISO 19650 FILE CODE
LLW - HPA - 00 - ZZ - DR - AA - 2932

PROJECT NO.	DRAWING NO.
LLW	2932
REV. DATE (YY-MM-DD)	
26_0217	
SCALE	DRAWN BY
1:100	SS
INFO SUIT.	CHECKED BY
S5	RH
UNCLASS	REVISION
	P04