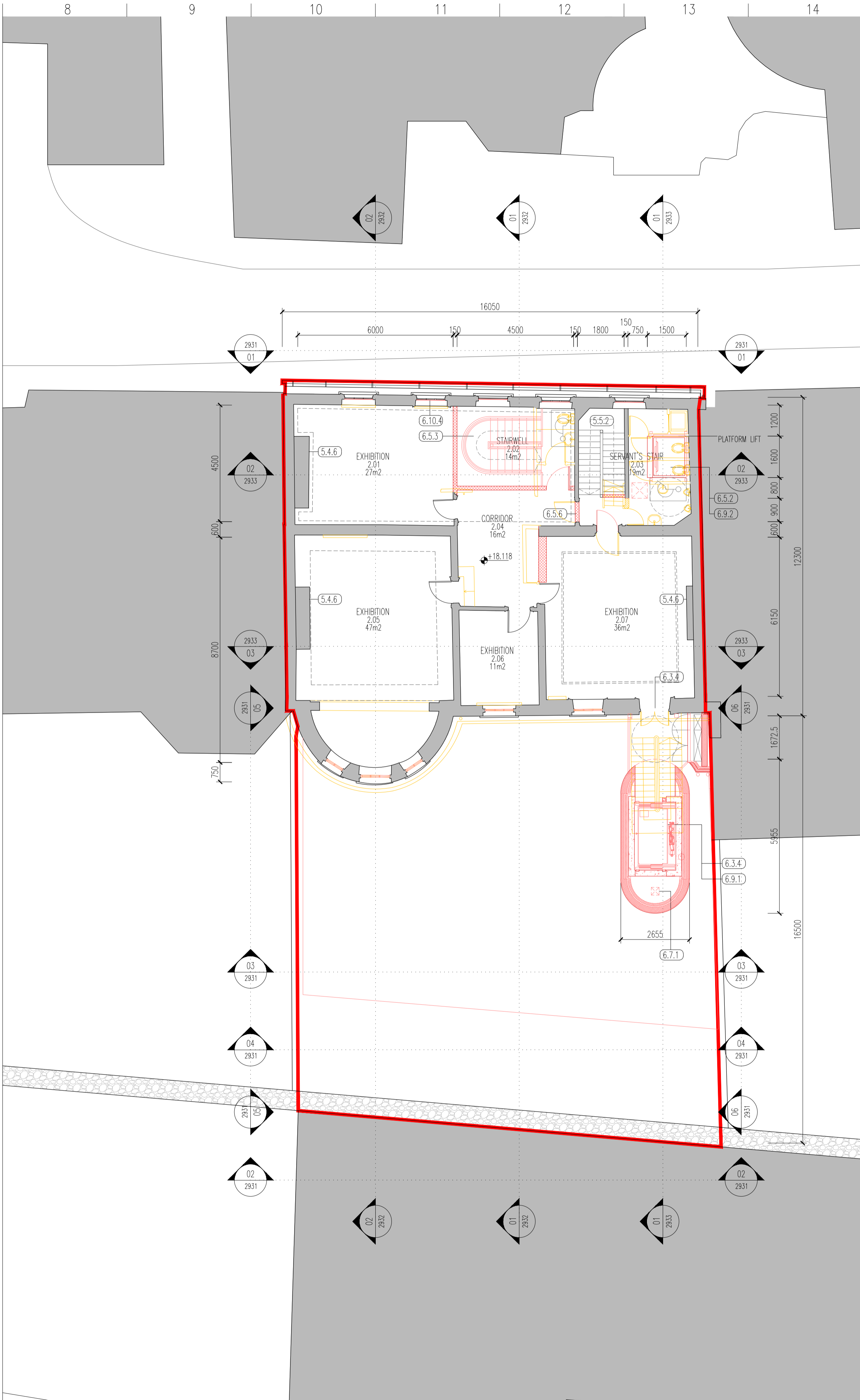


01 PROPOSED - FIRST FLOOR
1:100



02 PROPOSED - SECOND FLOOR
1:100

PROPOSED ALTERATIONS & REFURBISHMENT WORKS:
(THESE DRAWINGS TO BE READ IN CONJUNCTION WITH ARCHITECTURAL HERITAGE IMPACT ASSESSMENT)

ARCHITECT
hernehan peng architects
CONSULTATION ARCHITECTS
Lofts Architecture & Urbanism
STRUCTURAL, CIVIL, ENGINEERING, FIRE, PS&S ACCESS
McCrae Consulting Engineers

METHOD STATEMENT FOR CONSERVATION WORKS

MECHANICAL, ELECTRICAL & PLUMBING
Bernard Smith Consulting Engineers

QUANTITY SURVEYOR
Nolan Construction Consultants

PLASTERWORK SPECIALIST
Smith and Henderson Stuccoadores Ltd.

ARCHAEOLOGIST
Daniel Noonan Archaeological Consultancy

GENERAL NOTES:

- ELECTRONIC PDF FILES TAKE PRECEDENCE - AUTOCAD OR REVIT FILES ARE PROVIDED FOR INFORMATION AND BACKGROUND USE ONLY. IN THE EVENT OF ANY DISCREPANCIES PLEASE ADVISE THE EMPLOYER'S REPRESENTATIVE IMMEDIATELY.
- ALL DIMENSIONS TO BE CHECKED AND VERIFIED ON SITE PRIOR TO COMMENCEMENT OF THE WORK.
- ALL DIMENSIONS ARE IN MILLIMETRES UNLESS NOTED.
- DO NOT SCALE FROM DRAWINGS - ONLY FIGURED DIMENSIONS TO BE USED. DRAWINGS SHOULD NOT BE SCALED EITHER BY HAND OR FROM THE COMPUTER DIGITAL DATA.
- DISCREPANCIES BETWEEN ARCHITECTURAL, CIVIL, STRUCTURAL MEP AND/OR ANY OTHER DESIGN TEAM MEMBERS DRAWINGS MUST BE HIGHLIGHTED AND REPORTED TO THE EMPLOYER'S REPRESENTATIVE IMMEDIATELY. THIS DRAWING MUST BE READ IN CONJUNCTION WITH THE RELEVANT ARCHITECTURAL, CIVIL, STRUCTURAL MEP AND/OR ANY OTHER DESIGN TEAM MEMBERS DRAWINGS & SPECIFICATIONS.
- REFER TO ARCHITECT'S DRAWINGS FOR ALL FACADE AND FINISHES SET-OUT UNLESS OTHERWISE NOTED. REFER TO STRUCTURAL ENGINEER'S DRAWINGS FOR CONCRETE SET-OUT.
- REFER TO ARCHITECT'S AND FACADE ENGINEER'S SPECIFICATION FOR INFORMATION ON THE PRODUCTS AND SYSTEMS IDENTIFIED ON THESE DRAWINGS BY A TRS REFERENCE CODE IN THE ALPHANUMERICAL FORMAT (XXX-XXX).
- GROUND FLOOR LEVEL IS SET AT 0.00 AND ALL OTHER LEVELS ARE SHOWN AS RELATIVE TO THIS.
- IN CASE OF DISCREPANCIES, LARGER SCALES TAKE PRECEDENCE.

DATUM LEVEL:
ALL DATUMS ASL (ABOVE SEA LEVEL)

NOTE: DRAWINGS TO BE READ IN CONJUNCTION WITH ARCHITECTURAL DESIGN STATEMENT LLW-HPA-00-XX-RP-AA-9904 FOR FURTHER INFORMATION

LEGEND

- RED LINE: REDLINE DEVELOPMENT BOUNDARY
- SHADING: EXISTING BUILDING FABRIC - SECTION
- STIPPLE: CITY WALL
- SOLID: NEW CONSTRUCTION - PLAN / ELEVATION
- DOTTED: BLOCKWORK
- SPOTTED: CONCRETE / LIMCRETE (IN EXISTING BLDG.)
- BRICK: BRICK (SECTION)
- BRICK: BRICK
- GRAVEL: GRAVEL
- OPAQUE: OPAQUE GLASS BALUSTRADE
- DEMOLITION: DEMOLITION / REMOVAL - PLAN / ELEVATION
- DEMOLITION: DEMOLITION / REMOVAL - SECTION

6.1 CONSERVATION STRATEGY

- 6.1.1 RESTORATION OF CHARACTER
- 6.1.2 THE DESIGN PROPOSAL
- 6.1.2 EVOLUTION OF THE DESIGN

6.2 CHANGE OF USE

- 6.3 REAR EXTENSION
 - 6.3.1 ALTERATIONS TO BUILDING FABRIC TO REAR
 - 6.3.2 RASING OF GARDEN LEVEL AND LOWERING OF EXISTING LEVEL
 - 6.3.3 JUNCTION TO REAR OF HOUSE
 - 6.3.4 EXTERNAL LIFT SHAFT
 - 6.3.5 BOUNDARY WALLS
 - 6.3.6 IMPACT ON HISTORIC CITY WALL
- 6.4 EXTERNAL ALTERATIONS
 - 6.4.1 ALTERATIONS TO FRONT ELEVATION
 - 6.4.2 ALTERATION TO REAR ELEVATION
- 6.5 INTERNAL ALTERATIONS
 - 6.5.1 PROPOSED INTERNAL CIRCULATION
 - 6.5.2 NEW PLATFORM LIFT AND ASSOCIATED CHANGES AT GROUND AND BASEMENT
 - 6.5.3 NEW PROTECTED STAIR
 - 6.5.4 REPLACEMENT OF NON-HISTORIC BASEMENT STAIR
 - 6.5.5 SANITARY ACCOMMODATION AT BASEMENT LEVEL
 - 6.5.6 NEW AND BLOODED DOOR OPENINGS
- 6.6 STRUCTURAL INTERVENTIONS
 - 6.6.1 STRENGTHENING OF FLOORS
 - 6.6.2 ALTERATIONS TO STEEL STRUCTURES AT BASEMENT LEVEL
 - 6.6.3 REMOVAL OF STRUCTURAL STEEL AT SECOND FLOOR LEVEL
 - 6.6.4 LOCALISED UNDERPINNING
- 6.7 BUILDING SERVICES
 - 6.7.1 HEATING VENTILATION AND AIR CONDITIONING
 - 6.7.2 ELECTRICAL AND IT SERVICES
 - 6.7.3 SERVICES DISTRIBUTION
 - 6.7.4 CIVIL SERVICES
- 6.8 FIRE SAFETY INTERVENTIONS
 - 6.8.1 STRATEGY FOR MEANS OF ESCAPE
 - 6.8.2 PASSIVE FIRE PROTECTION
 - 6.8.3 FITNESS TO ENABLE EVACUATION IN EVENT OF FIRE
 - 6.8.4 OTHER MEASURES
 - 6.8.5 PROTECTION FROM FIRE DURING CONSTRUCTION
- 6.9 DISABLED ACCESS INTERVENTIONS
 - 6.9.1 STRATEGY FOR PART M COMPLIANCE
 - 6.9.2 FABRIC ALTERATIONS FOR DISABLED ACCESS
- 6.10 THERMAL EFFICIENCY UPGRADES
 - 6.10.1 ROOF INSULATION
 - 6.10.2 EXTERNAL INSULATION TO REAR ELEVATION
 - 6.10.3 INSULATING PLASTER TO INTERIOR
 - 6.10.4 SECONDARY GLAZING

6.3 REAR EXTENSION

- 6.3.1 ALTERATIONS TO BUILDING FABRIC TO REAR
- 6.3.2 RASING OF GARDEN LEVEL AND LOWERING OF EXISTING LEVEL
- 6.3.3 JUNCTION TO REAR OF HOUSE
- 6.3.4 EXTERNAL LIFT SHAFT
- 6.3.5 BOUNDARY WALLS
- 6.3.6 IMPACT ON HISTORIC CITY WALL

6.4 EXTERNAL ALTERATIONS

- 6.4.1 ALTERATIONS TO FRONT ELEVATION
- 6.4.2 ALTERATION TO REAR ELEVATION

6.5 INTERNAL ALTERATIONS

- 6.5.1 PROPOSED INTERNAL CIRCULATION
- 6.5.2 NEW PLATFORM LIFT AND ASSOCIATED CHANGES AT GROUND AND BASEMENT
- 6.5.3 NEW PROTECTED STAIR
- 6.5.4 REPLACEMENT OF NON-HISTORIC BASEMENT STAIR
- 6.5.5 SANITARY ACCOMMODATION AT BASEMENT LEVEL
- 6.5.6 NEW AND BLOODED DOOR OPENINGS

6.6 STRUCTURAL INTERVENTIONS

- 6.6.1 STRENGTHENING OF FLOORS
- 6.6.2 ALTERATIONS TO STEEL STRUCTURES AT BASEMENT LEVEL
- 6.6.3 REMOVAL OF STRUCTURAL STEEL AT SECOND FLOOR LEVEL
- 6.6.4 LOCALISED UNDERPINNING

6.7 BUILDING SERVICES

- 6.7.1 HEATING VENTILATION AND AIR CONDITIONING
- 6.7.2 ELECTRICAL AND IT SERVICES
- 6.7.3 SERVICES DISTRIBUTION
- 6.7.4 CIVIL SERVICES

6.8 FIRE SAFETY INTERVENTIONS

- 6.8.1 STRATEGY FOR MEANS OF ESCAPE
- 6.8.2 PASSIVE FIRE PROTECTION
- 6.8.3 FITNESS TO ENABLE EVACUATION IN EVENT OF FIRE
- 6.8.4 OTHER MEASURES
- 6.8.5 PROTECTION FROM FIRE DURING CONSTRUCTION

6.9 DISABLED ACCESS INTERVENTIONS

- 6.9.1 STRATEGY FOR PART M COMPLIANCE
- 6.9.2 FABRIC ALTERATIONS FOR DISABLED ACCESS

6.10 THERMAL EFFICIENCY UPGRADES

- 6.10.1 ROOF INSULATION
- 6.10.2 EXTERNAL INSULATION TO REAR ELEVATION
- 6.10.3 INSULATING PLASTER TO INTERIOR
- 6.10.4 SECONDARY GLAZING

NO.	DATE	REVISION DESCRIPTION
P04_26_0501		PART 8 PLANNING APPLICATION
P03_26_0417		PART 8 PLANNING APPLICATION
P02_26_0304		PART 8 PLANNING APPLICATION
P01_26_0217		PART 8 DRAFT SUBMISSION

CLIENT
WATERFORD TREASURES

PROJECT NAME
18 LADY LANE
CHILDREN'S MUSEUM
WATERFORD, X91 VF10

ARCHITECT
hernehan peng architects
44-46 O'NEILL STREET, WATERFORD, IR66 02
TEL: 051 931 931 FAX: 051 931 931
E-MAIL: INFO@HPA-00-XX-RP-AA-9904

DRAWING TITLE
PROPOSED PLANS
FIRST & SECOND FLOOR

ISO 19650 FILE CODE
LLW - HPA - 00 - ZZ - DR - AA - 1932

PROJECT NO.	DRAWING NO.		
LLW			
REV. DATE (YY-MM-DD)	SCALE		
26_0217	1:100		
INFO SUIT.	CHECKED BY	UNCLASS	REVISION
S5	RH		P04

1932