

PLANT LIST

Pollinator Friendly Planting is proposed in line with The All Ireland Pollinator Plan 2021-2025. Species to be selected from the following:

Trees

Pollinator Friendly Tree Planting: Semi-mature root balled trees to be planted into prepared tree pits or raised beds.
 Hazel *Corylus avellana*, Hawthorn *Crataegus monogyna*, Juneberry Tree *Amelanchier x grandiflora 'Robin Hill'*, Crab apple *Malus sylvestris*, Rowan *Sorbus acuparia var.*, Indian bean tree *Catalpa bignonioides*, Scots Pine *Pinus sylvestris*, Mimosa *Acacia Dealbata*, Bird Cherry *Prunus padus*

Planted Beds Pollinator friendly perennial planting

The planted beds will have a mix of pollinator friendly perennials, small shrubs and grasses, which will provide a strong visual impact with a good display of flowers over a long period. All plants to be planted in 450mm quality topsoil (BS3882:2015), topped with 50mm sterilised fine grade bark mulch and in feature areas horticultural grade, lime-free washed quartzite grit.

Herbaceous perennials

Aster 'Asran' / 'Stardust', Crocosmia 'Babylon', Geranium 'Cambridge', Hemerocallis 'Stella d'or', Nepeta 'Walkers Low', Rudbeckia 'Goldstrum', Sedum 'Autumn Joy', Stachys 'Byzantina', Achillea 'Moonshine', Allium schoenoprasum, Anemone 'Splendens', Aster 'Little Carlow', Calamintha, Fennel, Kniphofia, Lamium 'Pink Chablis', Leucanthemum, Osteospermum ecklonis, Salvia nemerosa, Stachys 'Hummelo', Symphytum 'Wisley Blue', Geum 'Scarlet tempest', Scabiosa 'Butterfly Blue', Dryopteris filix - mas

Small shrubs and herbs

Pittosporum 'Midget', Cornus Kousa 'China Girl' Fatsia japonica, Sweet Box Sarcococca hookeriana, Hebe species, Erysimum 'Bowles' Mauve', Hydrangea paniculata, Ceanothus thyrsifolius Victoria, Lavender Lavandula angustifolia, Rosemary Rosmarinus officinalis, Thyme Thymus species, Sweet Cicely Myrrhis odorata, Salvia officinalis, Oregano 'Golden'

Ornamental Grass / Bamboo species to be selected from the following:

Stipa 'Ponytails', Stipa arundinacea, Calamagrostis 'Karl Foerster', Miscanthus sinensis selection; Pseudosasa japonica (Bambusa metake), Phyllostachys aureosulcata 'Aureocaulis' Luzula nivea

Spring Bulbs:

Perennial schemes to be underplanted with spring bulbs, proposed (but are not limited to) include: Tulips, Daffodils, Crocus, Snowdrop, Muscari, Bluebells (Native).

Native Species

Irish native plant species will be selected where possible. Species proposed include:

Angelica archangelica, Digitalis purpurea, Allium ursinum, Achillea millefolium, Anthriscus sylvestris, Fragaria vesca, Geranium sanguineum, Mentha pulegium, Rubus fruticosus, Sanguisorba minor, Sedum acre, Symphytum officinale, Tanacetum vulgare, Taraxacum officinale

Final selection of species to be agreed with the local authority before construction commences.



Pink polished concrete benches



Textured concrete surfaces with exposed aggregates and sandblasted designs



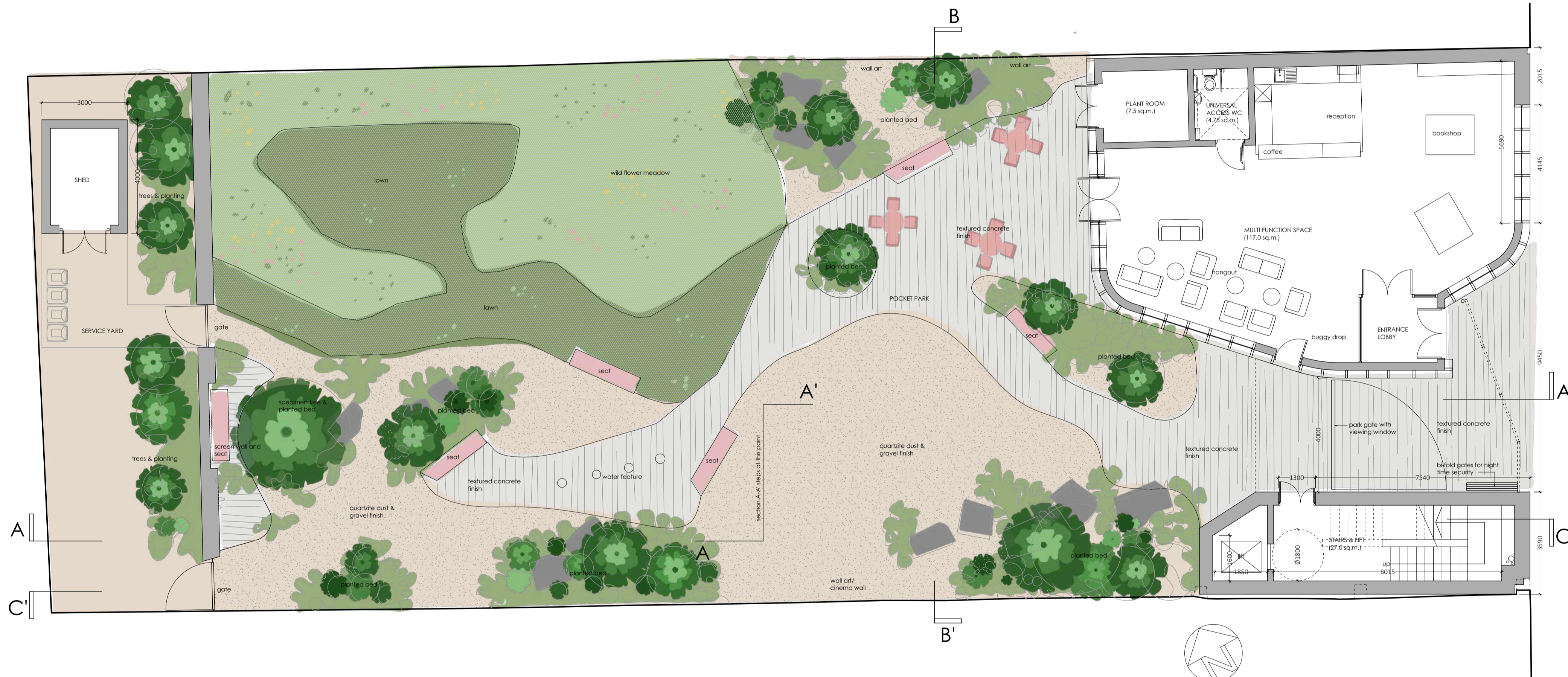
Quartzite dust & gravel



Steel edge detail between gravel and planted bed.



Limestone boulders and stepping stones



Native perennial wildflower meadow

The biodiversity meadow will have short flowering areas which will be cut every 4-6 weeks and long flowering areas cut once in spring and again in autumn. Plant with Irish Native wildflower seed mix sourced from a reliable local seed supplier, such as wildflowers.ie Pollinator friendly wildflowers have been chosen as good sources of nectar and/or pollen for all types of bees. They will also provide food for other insects like butterflies. They include (but are limited to) Knapweed *Centaurea nigra*, Field Scabious *Knautia arvensis*, Bird's-foot- trefoil *Lotus corniculatus*, Meadow Vetchling *Lathyrus pratensis*, Selfheal *Prunella vulgaris*, Yellow-rattle *Rhinanthus minor*, Oxeye Daisy/ Dog Daisy *Leucanthemum vulgare*, Dandelion *Taraxacum officinalis*, Clover *Trifolium repens*.

Final selection of species to be agreed with the local authority before construction commences. All plants to be planted on a 2-3mm finely raked seed bed on rolled subsoil.



NOTES
 1. APPRAISAL/SURVEY
 2. SKETCH DESIGN
 3. PLANNING APPLICATION
 4. FIRE CERTIFICATE
 5. TENDER DRAWINGS
 6. CONTRACT DOCUMENT
 7. CONSTRUCTION DRAWINGS
 8. FINAL DRAWINGS
 9. SUPERSEDED DRAWINGS

REV.	STAGE	NOTES	DATE	REV.	STAGE	NOTES	DATE

PLANNING DRAWING

CLIENT: WATERFORD CITY AND COUNTY COUNCIL
 PROJECT: THOMAS STREET ARTHOUSE + POCKET PARK

TITLE: PROPOSED LANDSCAPE PLAN
 DATE: JAN '26 SCALE: 1:100@A1 DRAWN BY: JS PROJECT STAGE: PP JOB No.: 2404

DRAWING No.: P005

DRAKE|HOURIGAN
 ARCHITECTURE | CONSERVATION | LANDSCAPE