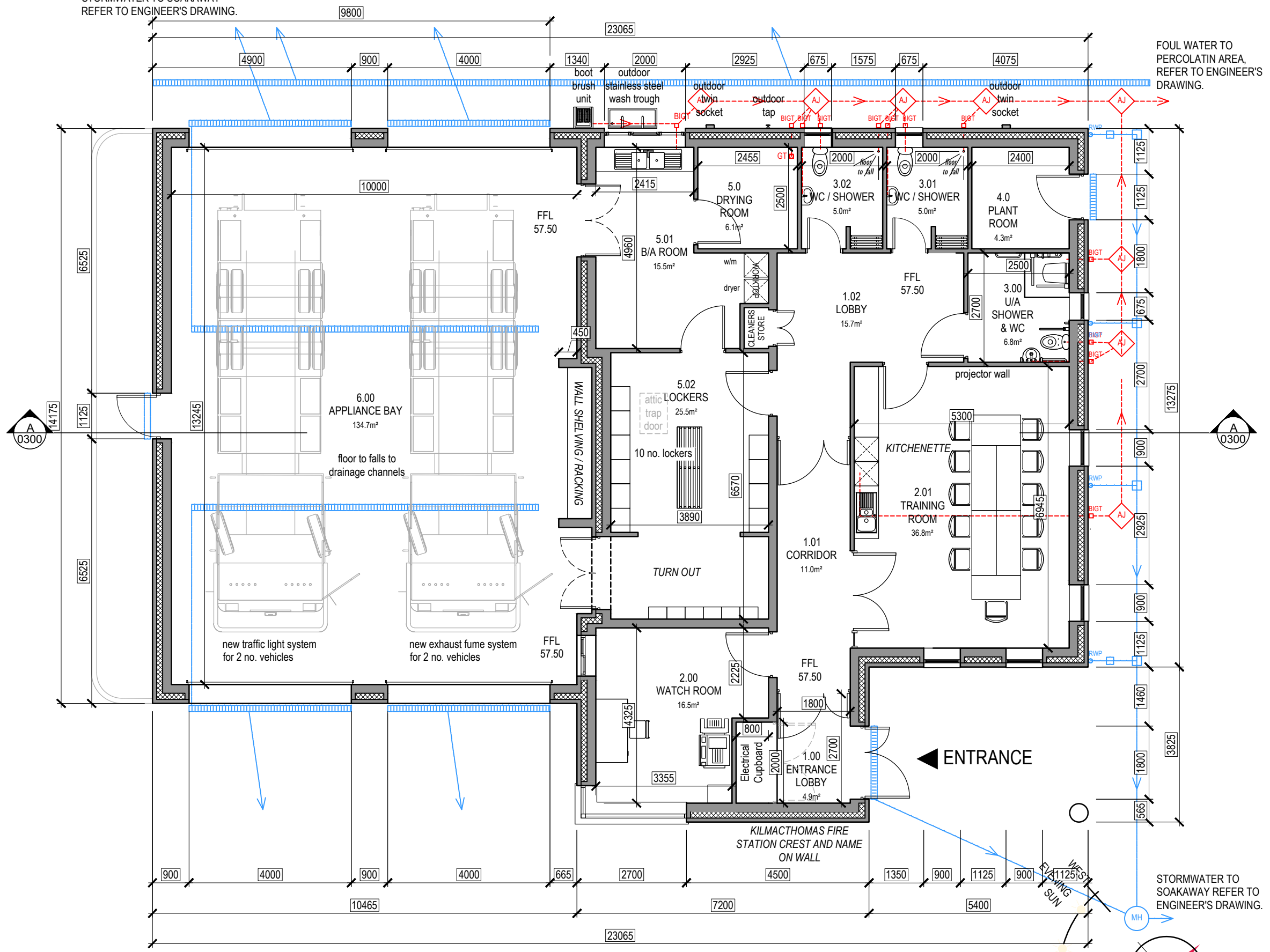


DO NOT SCALE FROM THIS DRAWING. USE FIGURED DIMENSIONS IN ALL CASES.
 VERIFY DIMENSIONS ON SITE AND REPORT ANY DISCREPANCIES TO THE ARCHITECTS IMMEDIATELY.
 THIS DRAWING IS TO BE READ IN CONJUNCTION WITH THE ARCHITECTS SPECIFICATION.
 © THIS DRAWING IS COPYRIGHT AND MAY ONLY BE REPRODUCED WITH THE ARCHITECTS PERMISSION.

NOTES

STORMWATER TO SOAKAWAY
 REFER TO ENGINEER'S DRAWING.

FOUL WATER TO PERCOLATIN AREA,
 REFER TO ENGINEER'S DRAWING.



INTERNAL FLOOR AREA = 306.7m²

GROUND FLOOR PLAN
 Area - 306.7 sq.m

| REV | DATE | DRAWN | NOTES |
|-----|------|-------|-------|
| | | | |
| | | | |
| | | | |
| | | | |
| | | | |
| | | | |
| | | | |
| | | | |
| | | | |

CJFA ARCHITECTS + **C.J. Falconer + Associates** ARCHITECTS

St. Patrick's House, Newtown, Waterford, Ireland. X91-RR76
 t: +353 (0)51 878888 f: +353 (0)51 878794 e: mail@cjfa.ie w: www.cjfa.ie

| | | |
|-------------------------------|--|---------------------------|
| JOB NUMBER: 2007286 | DWG. SERIES: PART 8 SUBMISSION | STATUS CODE: S2 |
|-------------------------------|--|---------------------------|

| | |
|---|----------------------|
| CLIENT: WATERFORD COUNTY COUNCIL | |
| JOB: NEW FIRE STATION AT KILMACTHOMAS, CO. WATERFORD | |
| DRAWING: FLOOR PLAN | |
| DATE: 09/11/2022 | SCALE: A3 - 1:100 |
| DRAWN: DAMIEN O'REILLY | CHECKED: DOR |

| | | | | | | | |
|-----------------|---------------------|-------------|--------------|-------------|------------|--------------------|-----------|
| PROJECT: FSK | ORIGINATOR: CJFA | ZONE: 00 | LEVEL: ST | TYPE: DR | DISC: A | NUMBER: PL-0200 | REVISION: |
|-----------------|---------------------|-------------|--------------|-------------|------------|--------------------|-----------|