

Appendix 20

Habitats Directive Natura

Impact Report



Waterford
City & County Council
Comhairle Cathrach
& Contae Phort Láirge



Comhairle Cathrach & Contae Phort Láirge
Waterford City & County Council

Waterford City and County Development Plan 2022-2028

Appropriate Assessment

Natura Impact Report

June 7th 2022

CONTENTS

1. Introduction

- 1.1 The European Habitats Directive and requirement for Appropriate Assessment
- 1.2 Appropriate Assessment Process: Purpose and Process
- 1.3 Procedure for Stage One Screening
- 1.4 Data Sources

2. Overview of Waterford City and County Development Plan and Receiving Environment

- 2.1 Overview of Waterford City and County Development Plan
- 2.2 Waterford City and County Development Plan Themes and Objectives
- 2.3 Description of Natura 2000 Network
- 2.4 Other Designated Sites
- 2.5 Overview of Receiving Environment
 - 2.5.1 Conservation Status of protected habitats and species
 - 2.5.2 Water Quality
 - 2.5.3 Habitat Loss and Species Disturbance
 - 2.5.4 Noise
- 2.6 Protection of Species and Habitats outside designated sites.

3. Appropriate Assessment Screening

- 3.1 Development Plan Policy Screening
- 3.2 Land Use Zoning Screening
- 3.3 Population and Residential Zoning Objectives
- 3.4 Infrastructure Projects
- 3.4 Settlement Objectives
- 3.5 Flood Risk and Sea-level Rise
- 3.6 Impacts on Natura 2000 sites within 15km of Waterford

4. Summary Screening Assessment

- 4.1 Other plans and projects, in-combination effects

5. Screening of proposed material amendments

6. Screening of proposed amendments to final plan

7. Conclusion of the Appropriate Assessment

References

1 Introduction

1.1 The European Habitats Directive and requirement for Appropriate Assessment

The aim of the European Habitats Directive (Council Directive 92/43/EEC on the conservation of wild habitats and of wild fauna and flora) was to create a network of protected wildlife sites in Europe, maintained at a favourable conservation status¹. Each member state was required to designate their most important natural areas as Special Areas of Conservation. The Directive specifies the scientific criteria on the basis of which SAC sites must be selected and very strictly curtails the grounds that can be used as justification for damaging a site. The network of sites is referred to as NATURA 2000 and includes SACs (Special Areas of Conservation) for protected habitats and species and SPAs (Special Protection Areas) for protected bird habitats. Wild bird species in SPAs and habitats and species listed on Annexes I and II of the Habitats Directive in SACs in which they are designated features have full European protection. Species listed on Annex IV of the Habitats Directive are strictly protected wherever they occur, whether inside or outside the Natura 2000 network. This protection is afforded to animal and plant species by Sections 51 and 52 of the Habitats Regulations. Annex I habitats outside of SACs are still considered to be of national and international importance and, under Article 27(4)(b) of the Habitats Regulations, public authorities have a duty to strive to avoid the pollution or deterioration of Annex I habitats and habitats integral to the functioning of SPAs.

The European Habitats Directive (Council of the European Communities 1992) was transposed into Irish legislation by the European Communities (Natural Habitats) Regulations 1997 and amended in 1998, 2005 and 2011. The (Natural Habitats) Regulations 2011 addressed transposition issues raised in judgements of the ECJ against Ireland in 2008 and along with provisions of the Planning and Development Act 2000 (as amended) (Part XAB), clarified the obligations of planning authorities under the Birds and Habitats Directives.

Article 6 of the Habitats Directive provides a strict assessment procedure for any plan or project not directly connected with or necessary to the management of a designated European site but which has the potential to have implications for the site in view of the site's conservation objectives. The Waterford City and County Development Plan 2022-2027, therefore, falls under the remit of Article 6.

The Regulations and the Planning and Development Act 2010 (as amended) require planning authorities when considering an application for a development that is likely to have a significant effect on a SAC/SPA, to ensure that an appropriate assessment of the implications of the development for the conservation status of the site is undertaken. Similarly land use plans are required to be subject to an appropriate assessment screening as set out in Section

¹ The conservation status of a species can be taken as "favourable" when population dynamics data on the species concerned indicate that it is maintaining itself on a long term basis as a viable component of its natural habitats, the natural range of the species is neither being reduced nor is likely to be reduced for the foreseeable future and there is and will continue to be a sufficiently large habitat to maintain its populations on a long-term basis. Article 1 (i) of the Habitats Directive 92/43/EEC

The conservation status of a habitat can be taken as "favourable" when its natural range and area it covers within that range is stable or increasing and the ecological factors that are necessary for its long-term maintenance exist and are likely to continue to exist for the foreseeable future.

177 U of the Act. “The competent authority shall determine that an appropriate assessment of a draft land use plan or a proposed development, as the case may be, is not required if it can be excluded, on the basis of objective information, that the draft land use plan or proposed development, individually or in combination with other plans or projects, will have a significant effect on a European site.”

1.2 Appropriate Assessment: Purpose and Process

The Department of Environment, Heritage and Local Government published *Appropriate Assessment of Plans and Projects in Ireland Guidance for Planning Authorities* in December 2009. This guidance document sets out the steps and procedures to be followed in undertaking an appropriate assessment of statutory land use plans within the framework of current planning legislation.

Section 4.10 of the Guidance states “ It is the competent authority’s responsibility to carry out the appropriate assessment of the plan. The Statement of AA of plans should be based on best available information, objective criteria, best scientific knowledge and expert judgment in relation to its impact on the integrity of a Natura 2000 site with respect to the conservation objectives of the site and to its structure and function. There should be no reasonable scientific doubt as to the absence of effects.”

It is recommended that the Department be consulted by a planning authority at every stage of the plan making process (i.e. at the pre-draft, draft and proposed amendments stages). The Department’s comments should be taken into account by the planning authority before the plan is adopted. In each iteration of the plan, earlier observations from the Department should be carried forward.

Section 4.8 of the guidance states “The key to deciding if an appropriate assessment of a plan would be required is determined by an assessment of whether the plan and its policies and objectives are likely to have a significant effect on a Natura 2000 site. The decision will be influenced by the nature and extent of the development likely to be proposed in the plan, and the plan’s area *in situ*, *ex situ* and in combination relationship to adjoining the Natura 2000 sites and the wider Natura 2000 network.

When screening the plan and its policies and objectives there are two possible outcomes:

The plan poses no risk of a significant effect and as such requires no further assessment; and the plan has potential to have a significant effect (or this is uncertain) and AA of the plan is necessary.

Screening can be used to establish which policies and objectives have potential to have significant effects, and therefore the ones that require further attention at the AA stage.

The European Commission methodological guidance on the provisions of Article 6(3) and 6(4) of the Habitats Directive sets out the four stages for the assessment.²

Stage 1. Screening — the process which identifies the likely impacts upon a Natura 2000 site of a project or plan, either alone or in combination with other projects or plans, and considers whether these impacts are likely to be significant;

Stage 2. Appropriate assessment — the consideration of the impact on the integrity of the Natura 2000 site of the project or plan, either alone or in combination with other projects or plans, with respect to the site’s structure and function and its conservation objectives. Additionally, where there are adverse impacts, an assessment of the potential mitigation of those impacts. The output of the AA is a Natura Impact Report;

Stage 3. Assessment of alternative solutions — the process which examines alternative ways of achieving the objectives of the project or plan that avoid adverse impacts on the integrity of the Natura 2000 site;

Stage 4. Assessment where no alternative solutions exist and where adverse impacts remain — an assessment of compensatory measures where, in the light of an assessment of imperative reasons of overriding public interest (IROPI), it is deemed that the project or plan should proceed.

1.3. Procedure for stage one screening

This report consists of Natura Impact Report following a screening for Habitats Directive Assessment of the Development Plan for Waterford City and County 2022-2028.

The screening stage examined the likely effects of the Waterford City and County Development Plan on Natura 2000 sites in Waterford and within a 15km radius of the City and County and considers whether it could be objectively concluded that these sites would not be significantly impacted by policies, objectives and zonings in the Plan. This assessment comprised four steps:-

Step 1: determining whether the project or plan is directly connected with or necessary to the management of the site: -

The Waterford City and County Development Plan 2022-2028 is a spatial planning framework for Waterford City and County and is not directly connected to the management of any Natura 2000 sites.

Step 2: describing the project or plan and the description and characterisation of other projects or plans that in combination have the potential for having significant effects on the Natura 2000 site;

² *Assessment of plans and projects significantly affecting Natura 2000 sites- methodological guidance on the provisions of Article 6(3) and 6(4) of the Habitats Directive 92/43/EEC.*
Managing Natura 2000 sites The provisions of Article 6 of the Habitats Directive 92/43/EEC.
European Commission (2018)

The objective of the Waterford City and County Development Plan 2022-2028 is to provide a strategic planning framework for the development of Waterford City and County. The Plan is intended to be a framework for local authority development and will address issues such as settlement, transportation, economic development, placemaking, heritage, conservation, climate action and environmental protection.

With a total population in excess of 116,000 (Census 2016), Waterford City and County encompasses 2.3% of the state population. One of the key assets of the City and County is its diversity of landscapes from uplands to woodlands, rivers and the coast providing for a strong tourism base. Waterford is characterised by two significant waterway corridors, the River Blackwater and River Suir and a number of other smaller rivers. The county has 147km of coastline and mountain ranges in the Comeraghs and Knockmealdowns. Waterford contains several sites designated for their nature conservation value especially along the coast. There are 14 Natura 2000 sites within the County comprising six Special Protection Areas and nine Special Areas of Conservation and 3 sites within 15km of the Waterford boundary with other counties.

Step 3: Identifying the potential effects on the Natura 2000 site;

The DoEHLG Guidance on Appropriate Assessment on Plans and Projects in Ireland (December 2009) states that all Natura 2000 sites within or adjacent the City & County must be mapped and tabulated, and site integrity and site conditions necessary to support the site integrity must be indicated.

The information presented in Table 1 details the Natura 2000 site within Waterford City & County. Table 2 details sites outside the Plan area and within a 15km buffer of the City & County .

The Natura 2000 sites are listed by designation; Special Areas of Conservation / Special Protection Areas. The following information is listed for each Natura 2000 site:

- Site code
- Site name
- Qualifying interests
- Conservation objectives
- Threats to site integrity

Step 4: Assessing the significance of any effects on the Natura 2000 site.

The screening stage involves application of the precautionary principle proportional to the policy/objective and the Natura 2000 site in question. Objectives and policies from the Waterford City & County Development Plan and their impact on Natura sites have been screened to ascertain if the policies / objectives are likely to have significant effects on any Natura 2000 sites, using the following framework.

- Development Plan zoning/policy/objective

- Natura 2000 site
- Qualifying interests
- Threats to site integrity
- Potential impacts from the Waterford City & County Development Plan 2013-2019
- Risk of significant impact (Y/N)
- Potential 'in combination' impacts
- Risk of significant impacts (Y/N)
- Avoidance and (then) mitigation measures
- Action required: Policy change needed / rewording / additional CDP objective

Where no significant effects are found, then policies or objectives are accepted. If all the policies / objectives/zonings in the Waterford City and County Development Plan are found not to have a significant effect on any Natura 2000 site no further assessment is required.

Where a policy / objective as worded does have potential for a significant effect, a Stage 2 Appropriate Assessment and preparation of a Natura Impact Report is required.

The following guidance documents informed the assessment methodology:

EC (2001) *Assessment of plans and projects significantly affecting Natura 2000 sites: Methodological guidance on the provisions of Article 6(3) and (4) of the Habitats Directive 92/43/EEC*. Environment Directorate-General of the European Commission.

EC (2018) *Managing Natura 2000 sites: The provisions of Article 6 of the 'Habitats' Directive 92/43/EEC*. European Commission, Brussels.

DEHLG (2010) *Appropriate Assessment of Plans and Projects in Ireland – Guidance for Planning Authorities*. Department of the Environment, Heritage and Local Government, Dublin.

NPWS (2010a) *Appropriate Assessment under Article 6 of the Habitats Directive: Guidance for Planning Authorities*. Circular Letter NPWS 1/10 & PSSP 2/10. Department of the Environment, Heritage and Local Government, Dublin.

1.4 Data Sources

National Parks and Wildlife Service published a series of Conservation Objectives for the range of Natura 2000 sites in Waterford which set out targets and indicators for maintenance or restoration of the favourable conservation status of the qualifying habitats and species of the Natura 2000 Network.

The overriding objective of the Habitats Directive is to ensure that the habitats and species covered achieve 'favourable conservation status' and that their long-term survival is secured across their entire natural range within the EU (EU Commission, 2010). In its broadest sense, favourable conservation status means that an ecological feature is being maintained in a satisfactory condition, and that this status is likely to continue into the future.

The conservation status of a species is the sum of the influences acting on the species that may affect the long-term distribution and abundance of its populations. The conservation status will be taken as ‘favourable’ when:

- the population dynamics data on the species concerned indicate that it is maintaining itself on a long-term basis as a viable component of its natural habitats; and
- the natural range of the species is neither being reduced nor is likely to be reduced for the foreseeable future; and
- there is, and will probably continue to be, a sufficiently large habitat to maintain its populations

For coastal SPA sites, conservation objectives are defined for attributes relating to bird species populations, and for attributes related to the maintenance and protection of habitats that support them. These attributes are:

- Population trend;
- Population distribution;
- Habitat range and area (extent).

Appendix 1 details the Conservation Objectives for the Natura 2000 Network in Waterford.

Some sites within the Natura 2000 Network were the subject of Conservation Management Plans prepared by NPWS which although were not all published provide useful baseline information on habitat mapping and habitat management issues pertaining to those sites. Plans were prepared for Ardmore Head, Tramore Dunes and Back Strand and the Comeragh Mountains.

A number of habitat and species specific surveys commissioned by NPWS contain valuable habitat data and condition status assessments relevant to a number of sites within the Natura 2000 Network in Waterford. These include;

Conservation Objectives Supporting Documents for Waterford’s Natura2000 Network
National Survey of Native Woodland 2003-2008
National Survey of Upland Habitats (Pilot Survey Phase, 2009-2010) Site Report No. 3:
Comeragh Mountains cSAC
Saltmarsh Monitoring Project 2007-2008
The Status of EU Protected Habitats and Species in Ireland 2019
Waterford Chough Survey 2008
Wildlife Manual 78 The Irish Semi-natural Grasslands Survey 2007-2012
Wildlife Manual 105 Calaminarian Grassland Monitoring 2018
Wildlife Manuals 108 Saltmarsh Monitoring Project 2017-2018

Other reports that contain valuable baseline data and analysis of trends in conservation status include;

2. Overview of Waterford City and County Development Plan and the Receiving Environment

2.1 Overview of Waterford City and County Development Plan

The Waterford City and County Development Plan is a land use plan and overall strategy for the proper planning and sustainable development of Waterford City and County over the six year period 2022-2028. The Development Plan is structured as follows;

Volume 1- Written Statement detailing Context and Strategy, policies for Waterford City and County in relation to; Economy, Education and Retail, Transport and Mobility, Utilities and Infrastructure, Energy and Communication, Housing and Sustainable Communities, Placemaking, Climate Action, Biodiversity and Environment, Landscape, Coast, Marine and Green Infrastructure and Heritage.

Volume 2 contains appendices detailing protected sites, landscape and seascape character assessment, flood risk assessment, zoning and settlement maps, SEA Environmental Report and Natura Impact Report.

2.2 Waterford City and County Development Plan Themes and Objectives

The vision of the Plan is that by 2028 Waterford City and County will have continued to grow and will be evolving to become an even more attractive, prosperous, resilient and sustainable place anchored by Waterford City as a Living and Learning City and City Region driver. It will be an excellent place to live, visit and do business. It will be recognised for enterprise and inventiveness in the knowledge economy and high-value markets with a particular focus on biopharmaceuticals, technological innovation, tourism, food and drink, fishing and the primary industries and the City and County's unique built, historic, cultural and natural environment, which will be protected and, where appropriate, enhanced as a key asset in underpinning a high quality of life and place. Decision makers will have acted confidently and taken the courageous decisions necessary to further develop a robust and diversified economy. The council will have taken a proactive approach towards development that promotes and facilitates appropriate development that nonetheless; ensures the sustainable use of natural resources, can deal with climate change and creates a more, open inclusive society.

The Core Strategy Strategic Aims of the Plan are as follows;

1. Based on the population /employment targets and policy objectives of the NPF, RSES & MASP, provide a local policy framework to support development where it is consistent with the principles of sustainable development, and which is applied through planning decisions which are clear, consistent, robust and risk adverse.

2. Identify investment priorities to deliver and support the settlement strategy and hierarchy, founded on the principle of infrastructure-led development.
3. Counteract imbalance in housing type, tenure and location both within settlements, between settlements and across broader rural areas in order to meet the needs of the people of Waterford, mitigating current residential leakage and unsustainable travel patterns.
4. To require where appropriate all plans and projects to comply with the requirements of the SEA, Water Framework, Flood and Habitats Directives. To protect the integrity of all Natura 2000 sites, pNHAs and sites of Local Biodiversity Importance.
5. To ensure the policies and objectives of the Development Plan demonstrate consistency with national and regional policy objectives set out in the NPF, RSES and MASP.
6. To implement a tiered and infrastructure-led approach to the development of new residential land and engage in active land management to bring forward opportunities for redevelopment where feasible.
7. Develop key infrastructure required to develop the concentric city model for Waterford City, consistent with the NPF, RSES and MASP and founded on the assimilation of PLUTS and WMATS policy objectives.
8. Implement the Waterford City and County Climate Adaptation Strategy 2019 and promote a climate resilient pattern of development and land uses which assist in achieving national climate change mitigation and adaptation targets.
9. To protect and strengthen the retail primacy of Waterford City within the Southern Region.
10. To protect and enhance the vibrancy and vitality of urban and rural centres and their mixed use functions/capacity as community hubs.
11. To enhance the sense of place throughout settlements in Waterford and deliver 10 minute neighbourhoods through enhanced pedestrian and cycle permeability and mixed land use planning.
12. To protect existing employment and promote new employment areas at strategic locations and district and local services centres across Waterford county.
13. Continue to encourage and promote the sustainable development of a range of quality tourism facilities, attractions and accommodation types across Waterford.

2.3 Description of Natura 2000 Network

Waterford supports a wide range of habitats and species including Blanket Bog, Dry and Wet Heath, Rivers with Floating and Tall Herb Vegetation, Coastal Grassland, Sand Dunes, Salt Marsh and Mudflats, Alluvial and Oak Woodlands. The value of these habitats is recognised in the high number of sites in the county designated by the State for nature conservation. There are nine SACs and six SPAs designated in County Waterford. These sites must be managed to ensure maintenance or restoration of their favourable conservation status.



Map 1. Special Areas of Conservation (in blue) and Special Protections Areas (red hatching) in Waterford.

Table 1: Natura 2000 sites within Waterford City and County

Site code Site name	Qualifying interests	National Conservation Status 2019 ³	Conservation Objectives
0002137 Lower River Suir	Alluvial Wet Woodland	Bad (declining)	To restore the favourable conservation condition of Alluvial Woodland
	Yew Wood,	Bad (stable)	To restore the favourable conservation condition of Yew Woods
	Floating River Vegetation,	Inadequate (declining)	To maintain the favourable conservation condition of Floating River Vegetation
	Atlantic Salt Meadows,	Inadequate (declining)	To restore the favourable conservation condition of Atlantic Salt Meadows
	Mediterranean Salt Meadows	Bad (declining)	To restore the favourable conservation condition of Mediterranean Salt Meadows
	Old Oak Wood	Bad (declining)	To restore the favourable conservation condition of Old Oak Woodland
	Eutrophic Tall Herbs	Bad (stable)	To maintain the favourable conservation condition of Eutrophic Tall Herbs
	Sea Lamprey,	Favourable (stable)	To restore the favourable conservation condition of Sea Lamprey
	Brook Lamprey,	Unknown	To restore the favourable conservation condition of Brook Lamprey
	River Lamprey,	Bad (declining)	To maintain the favourable conservation condition of River Lamprey
	Freshwater Pearl Mussel,	Bad (declining)	To restore the favourable conservation condition of Freshwater Pearl Mussel
	Crayfish,	Bad (stable)	To restore the favourable conservation condition of Crayfish
	Twaite Shad,	Inadequate (stable)	To restore the favourable conservation condition of Twaite Shad
		Favourable (improving)	To restore the favourable conservation condition of Twaite Shad

³ The Status of EU Protected Habitats and Species in Ireland 2019 (Department of Culture, Heritage and the Gaeltacht)

	Atlantic Salmon, Otter		River Lamprey To restore the favourable conservation condition of Freshwater Pearl Mussel To maintain the favourable conservation condition of Crayfish ⁴ To restore the favourable conservation condition of Twaite Shad To restore the favourable conservation condition of Salmon To maintain the favourable conservation condition of Otter In accordance with attributes and targets set out in Conservation Objectives Series (NPWS 2017)
002123 Ardmore Head	Dry coastal heath Vegetated sea cliffs.	Bad (stable) Inadequate (stable)	To maintain the favourable conservation condition of Vegetated sea cliffs To maintain the favourable conservation condition of Dry Heath
000072 Blackwater River	Estuary Mudflats	Inadequate (declining) Inadequate (declining) Inadequate (stable)	To maintain the favourable conservation condition of Estuary To maintain the favourable conservation condition of

⁴ Note the crayfish population of the River Suir was decimated by the Crayfish Plague in 2018

(Cork/Waterford)	Shingle Banks,	Favourable (stable)	mudflats and sandflats
	Salicornia mudflats	Inadequate (declining)	To maintain the favourable conservation condition of perennial vegetation of stony banks
	Atlantic Salt Meadows	Inadequate (declining)	To maintain the favourable conservation condition of salicornia mudflats
	Mediterranean Salt Meadows	Inadequate (declining)	To restore the favourable conservation condition of Atlantic Salt Meadows
	Floating River Vegetation	Bad (declining)	To maintain the favourable conservation condition of Mediterranean Salt Meadows
	Old Oak Woods	Bad (declining)	To maintain the favourable conservation condition of Floating River Vegetation
	Alluvial Woodland	Bad (stable)	To restore the favourable conservation condition of Old Oak Woodland
	Yew Woodland	Bad (declining)	To restore the favourable conservation condition of Alluvial Woodland
	Freshwater Pearl Mussel	Bad (declining)	Objective under review by NPWS
	White-clawed Crayfish	Bad (stable)	To restore the favourable conservation condition of Freshwater Pearl Mussel
	Twaite Shad	Bad (stable)	To maintain the favourable conservation condition of Crayfish ⁵
	Sea Lamprey,	Favourable (stable)	To restore the favourable conservation condition of
	Brook Lamprey,	Unknown	
	River Lamprey,	Inadequate (stable)	
	Salmon	Favourable (improving)	
	Otter	Favourable (stable)	
Killarney Fern			

⁵ Note the crayfish population of the River Suir was decimated by the Crayfish Plague in 2018

			<p>Twaite Shad</p> <p>To restore the favourable conservation condition of Sea Lamprey</p> <p>To maintain the favourable conservation condition of Brook Lamprey</p> <p>To maintain the favourable conservation condition of River Lamprey</p> <p>To maintain the favourable conservation condition of Salmon</p> <p>To restore the favourable conservation condition of Otter</p> <p>To maintain the favourable conservation condition of Killarney Fern</p> <p>In accordance with attributes and targets set out in Conservation Objectives Series (NPWS 2017)</p>
001952 Comeragh Mountains	<p>Blanket bog</p> <p>Dry Heath</p> <p>Wet Heath</p> <p>Alpine Heath</p> <p>Rocky Slopes</p>	<p>Bad (declining)</p> <p>Bad (stable)</p> <p>Bad (declining)</p> <p>Bad (improving)</p> <p>Inadequate (stable)</p>	<p>To maintain or restore the favourable conservation condition of the Annex I Habitat(s) and/or Annex II species for which the cSAC has been selected.</p>

	Oligotrophic Lakes Floating River Vegetation Slender Green Feather Moss	Inadequate (stable) Inadequate (declining) Favourable (stable)	
002324 Glendine Wood	Semi-natural Woodland with rare assemblages of Ground Flora. Killarney Fern	Favourable (stable)	To maintain or restore the favourable conservation condition of the Annex I Habitat(s) and/or Annex II species for which the cSAC has been selected.
000665 Helvick Head	Vegetated Sea Cliffs Dry Heath.	Inadequate (stable) Bad (Stable)	To maintain the favourable conservation condition of the vegetated sea cliffs in Helvic Head Sac defined in the Conservation Objectives Series (NPWS 2016) To maintain the favourable conservation condition of Dry Heath in Helvic Head SAC defined in the Conservation Objectives Series (NPWS 2016)
000668 Nier Valley Woods	Old Oak Woodlands Dry Heath	 Bad (Declining) Bad (Stable)	To maintain or restore the favourable conservation condition of the Annex I Habitat(s) and/or Annex II species for which the cSAC has been selected.
002162 River Nore and	Estuary Mudflats & Sandflats	Inadequate (declining) Inadequate (declining)	To maintain the favourable conservation condition of Estuary To maintain the favourable conservation condition of

River	Reefs	Inadequate (stable)	mudflats and sandflats
Barrow	Salicornia Mudflats	Favourable (stable)	To maintain the favourable conservation condition of salicornia mudflats
(Waterford Estuary)	Atlantic Salt Meadows	Inadequate (declining)	To restore the favourable conservation condition of Atlantic Salt Meadows
	Mediterranean Salt Meadows	Inadequate (declining)	To restore the favourable conservation condition of Mediterranean Salt Meadows
	Floating River Vegetation	Bad (stable)	To maintain the favourable conservation condition of Floating River Vegetation
	Dry Heath	Bad (declining)	To maintain the favourable conservation condition of Dry Heath
	Tall Herb River Vegetation	Inadequate (declining)	To maintain the favourable conservation condition of Tall Herb River Vegetation
	Petrifying Springs	Bad (declining)	To maintain the favourable conservation condition of Petrifying Springs
	Old Oak Woods	Bad (declining)	To maintain the favourable conservation condition of Old Oak woods
	Alluvial Woods	Bad (declining)	To restore the favourable conservation condition of Alluvial woods
	White-clawed Crayfish	Bad (declining)	To maintain the favourable conservation condition of White-clawed Crayfish
	Nore Freshwater Pearl Mussel	Inadequate (declining)	To restore the favourable conservation condition of Nore Pearl Mussel
	Whorl Snail	Bad (declining)	To restore the favourable conservation condition of Whorl Snail
	Twaite Shad	Bad (stable)	To maintain the favourable conservation condition of Twaite Shad
	Sea Lamprey,	Favourable (stable)	To maintain the favourable conservation condition of Sea Lamprey
	Brook Lamprey,	Unknown	
River Lamprey,	Inadequate (stable)	To restore the favourable conservation condition of River Lamprey	

	<p>Salmon</p> <p>Otter</p> <p>Killarney Fern</p>	<p>Favourable (improving)</p> <p>Favourable (stable)</p>	<p>To maintain the favourable conservation condition of Whorl Snail.</p> <p>To restore the favourable conservation condition of Twaite Shad</p> <p>To restore the favourable conservation condition of Sea Lamprey</p> <p>To restore the favourable conservation condition of Brook Lamprey</p> <p>To restore the favourable conservation condition of River Lamprey</p> <p>To restore the favourable conservation condition of Salmon</p> <p>To restore the favourable conservation condition of Otter</p> <p>To maintain the favourable conservation condition of Killarney Fern</p> <p>In accordance with attributes and targets set out in Conservation Objectives Series (NPWS 2011)</p>
<p>00671</p> <p>Tramore Dunes and</p>	<p>Mudflats and sandflats</p> <p>Drift lines</p> <p>Vegetated Shingle</p>	<p>Inadequate (declining)</p> <p>Inadequate (declining)</p> <p>Inadequate (stable)</p>	<p>To maintain the favourable conservation condition of mudflats and sandflats</p> <p>To maintain the favourable conservation condition of annual vegetation of drift lines</p> <p>To maintain the favourable conservation condition of</p>

Back Strand	Salicornia colonising mud and sand Atlantic Salt Meadows Mediterranean Salt Meadows Embryonic Dunes White Dunes Fixed Dunes.	Favourable (stable) Inadequate (declining) Inadequate (declining) Inadequate (stable) Inadequate (stable) Bad (declining)	perennial vegetation of stony banks To maintain the favourable conservation condition of Salicornia colonising mud and sandflats To maintain the favourable conservation condition of Atlantic Salt Meadows To maintain the favourable conservation condition of Mediterranean Salt Meadows To maintain the favourable conservation condition of Embryonic Shifting Dunes To maintain the favourable conservation condition of Marram/ White Dunes To maintain the favourable conservation condition of Fixed Dunes In accordance with attributes and targets set out in Conservation Objectives Series (NPWS 2013)
Site code Site name	Qualifying interests		
Tramore Backstrand	Brent Geese, Golden Plover, Grey Plover, Black-tailed Godwit, Bar-tailed Godwit, Lapwing, Dunlin, Sanderling		To maintain the bird species of special conservation interest for which this SPA has been listed at favourable conservation status
Dungarvan Bay	Brent Goose, Black-tailed Godwit , Bar-tailed Godwit, of international importance Nationally important numbers of Shelduck, Wigeon, Red-breasted		To maintain the bird species of special conservation interest for which this SPA has been listed at favourable conservation status

	Merganser, Grey Plover, Golden Plover, Lapwing, Knot, Sanderling, Dunlin, Redshank and Turnstone		
Blackwater Estuary	Little Egret, Golden Plover, Bar-tailed Godwit, Sandwich Tern, Roseate Tern, Common Tern		To maintain the bird species of special conservation interest for which this SPA has been listed at favourable conservation status
Blackwater Callows			
Helvick Head Coast	Peregrine, Chough Kittiwake and Guillemot		To maintain the bird species of special conservation interest for which this SPA has been listed at favourable conservation status
Mid-Waterford Coast	Peregrine, Chough Herring Gull, Cormorant		To maintain the bird species of special conservation interest for which this SPA has been listed at favourable conservation status

Table 2: Natura 2000 sites within 15km of Waterford City and County

County Cork		Special Areas of Conservation (SACs)
Site code	Qualifying interests	Conservation objectives
Site name		
Ballymacoda Bay SPA	Estuaries, salt meadows, mudflats and sandflats	To maintain the Annex I habitats and Annex II species for which the cSAC has been selected at favourable conservation status.

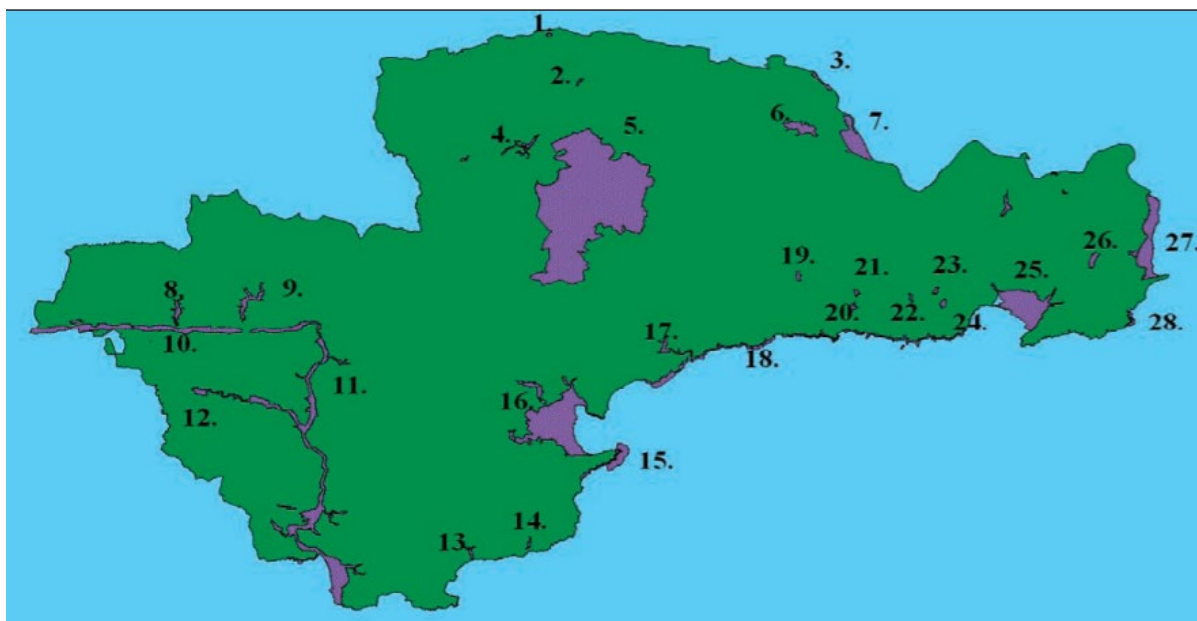
		.
000072 Blackwater River (Cork/Waterford)	Estuary, Mudflats, Shingle Banks, Salt Meadows, Floating River Vegetation, Old Oak Woods, Alluvial Woodland, Yew Woodland, Freshwater Pearl Mussel, White-clawed Crayfish, Shad, Lampreys, Salmon, Otter, Killarney Fern	To maintain the Annex I habitats and Annex II species for which the cSAC has been selected at favourable conservation status. See above
Kilkenny		Special Areas of Conservation (SACs)
Site code Site name	Qualifying interests	Conservation objectives
0002162 River Barrow and River Nore	Alluvial Wet Woodlands, Petrifying Springs, Old Oak Woodlands, Floating River Vegetation, Estuary, Tidal Mudflats, Salicornia Mudflats, Atlantic Salt Meadows, Dry Heath and Eutrophic Tall Herbs Sea lamprey, Brook Lamprey, River Lamprey, Freshwater Pearl Mussel, Nore Freshwater Pearl Mussel, Crayfish, Twaite Shad, Atlantic Salmon, Otter <i>Vertigo moulinsina</i> , Killarney Fern	To maintain the Annex I habitats and Annex II species for which the cSAC has been selected at favourable conservation status. See above
Wexford	Large Shallow Inlets and Bays	To maintain the favourable conservation condition of

000764	Reefs	these habitats In accordance with attributes and targets set out in Conservation Objectives Series (NPWS 2013).
Hook Head SAC	Vegetated Sea Cliffs	

2.4 Other Designated Sites

2.4.1 Proposed Natural Heritage Areas

There are 30 proposed Natural Heritage Areas in Waterford City and County protected in the Development Plan in recognition of nationally important habitats, species and sites of geological interest. Fenor Bog is also designated a Nature Reserve and is the only community owned Nature Reserve in the State. Map 2 and Table 3 below list the proposed NHAs in Waterford.



Map 2. Proposed Natural Heritage Areas in Waterford City and County

Reference No.	pNHA	Reference No.	pNHA
1.	Kilsheelan Lake	15.	Heilbhc Head
2.	Toor Wood	16.	Dungarvan Harbour
3.	Fiddown Island	17.	Stradbally Woods
4.	Nire Valley Woods	18.	Ballyvoyle Head to Tramore
5.	Comeragh Mountains	19.	Ballinlough
6.	Portlaw Woods	20.	Lissaviron Bog
7.	Coolfin & Darrigle Marshes	21.	Castlecraddock Fen
8.	Glenmore Woods	22.	Fenor Bog (NHA)
9.	Lismore Woods	23.	Carrickavrantry Reservoir & Marsh
10.	Blackwater Callows	24.	Islandtarsney Fen
11.	Blackwater River and Estuary	25.	Tramore Dunes & Backstrand
12.	Tallow Church of Ireland	26.	Belle Lake
13.	Ballyeelinan Wood	27.	Creadan Head
14.	Glen Anna Wood	28.	Dunmore East Cliffs

29.	Kilbarry/Ballinakill	30.	King's Channel
-----	----------------------	-----	----------------

Table 3 Proposed Natural Heritage Areas in County Waterford

2.4.2 Wetlands

Wetlands are areas of marsh, fen, peat land or water, whether natural or artificial, permanent or temporary, with water that is static or flowing. Wetlands are significant habitats in Waterford providing habitats for communities of species that can survive in aquatic and semi-aquatic conditions. The amount of drainage and water present are their most important feature as increased drainage or flooding can cause significant change in habitat value and species diversity. The Water Framework Directive and Ramsar Convention provide for the protection and wise use of Wetlands. A total of 45 sites have been identified as Ramsar sites in Ireland. These are wetlands that are of significant value for nature. There are two Ramsar Sites in Co. Waterford - Dungarvan Harbour and Tramore Bay.

There are over 200 wetlands of local biodiversity interest in Waterford and ongoing survey work since 2006⁶ has recorded their habitat diversity and condition. These and other habitats such as riverbanks, small woodlands and hedgerows are very important as interconnecting ecological corridors between designated sites and recognised under Article 10 of the EU Habitats Directive which states that Member States shall endeavour in their land use planning and development policies, to encourage the management of features of the landscape, which are of major importance for wild flora and fauna.

A key challenge is the maintenance of favourable conservation status for all protected habitats and species avoiding encroachment of development on designated sites and sites of local biodiversity value, maintaining appropriate buffers around these areas and also enhancing green infrastructure and ecological corridors between key sites of nature conservation value.

2.5 Overview of Receiving Environment

2.5.1 Conservation Status of protected habitats and species occurring in Waterford

In December 2007, the first baseline assessments of conservation status for all 59 habitats and c.100 species listed for protection by the EU in Ireland was prepared by the National Parks and Wildlife Service as required under Article 17 of the Habitats Directive. The report was the first such comprehensive compilation of the status of habitats, animals and plants in Ireland which have protected status under national and EU law. The report found that only 7% of the habitats examined were in good status, with 46% inadequate and 47% bad. Many habitats associated with water were considered to be in bad condition. Even moderate declines in water quality makes rivers and lakes unsuitable for many fish and invertebrate species. Coastal habitats were found to have declined in quality, often as a result of recreation and development pressure over the previous 20 years. Roughly 50% of the species examined were in good status, while 10%

⁶ Wetland Surveys completed in 2006, 2015 and 2021.

were considered bad. Species such as bat, seals, dolphins and whales were considered to be in good condition.

Availability of data on some Annex II species such as Twaité Shad and Allis Shad is poor but surveys on Otter and Lamprey indicate that they hold favourable conservation status in Waterford.

In Waterford City Annex 1 habitats listed as qualifying interests for this section of the River Suir SAC are Atlantic Salt Meadows and Mediterranean Salt Meadows. Areas of saltmarsh along King's Channel and Ballynakill were surveyed in the NPWS Saltmarsh monitoring project 2007-2008. The overall conservation status of the survey site was rated as unfavourable-bad due to the negative impact of adjacent development, infilling of saltmarsh habitat and disturbance from pipeline construction, potential loss of Mediterranean Salt Meadows (Sea Rush had been recorded in the past but not in this survey) habitat and decline of the rare species Meadow Barley.

A more recent survey in 2017-2018⁷ reported a favourable condition status for structure and function of the saltmarsh habitat and good ecological status for the site.

The third Irish report on status of habitats and species protected under the EU Habitats Directive (NPWS 2019) shows that most listed habitats are at unfavourable status and almost half are demonstrating ongoing declines. "The majority of species (57%) listed on the Habitats Directive are, however at Favourable status in Ireland including most of the bat species, seals and cetaceans. A declining trend is reported for 15% of species with freshwater species most at risk. An improving trend is reported for 17% of species with populations of species such as otter and pine marten and many bat species expanding. The salmon is stable due to a very recent improving trend though still in low numbers and is susceptible to a wide range of pressures in the ocean and freshwater. Fish species such as sea lamprey, pollan and twaité shad remain at Bad status although a small number are considered to be in Bad status and continue to require concerted effort to protect and restore them. The report highlighted that the freshwater pearl mussel, which can live to an age of 130 years, is on the brink of extinction in Ireland. Waterford has three freshwater pearl mussel rivers – the Blackwater, Licky and Clodiagh all of which are known to have had a dramatic decline in populations. A survey of the River Clodiagh FPM population by Ross in 2006 estimated a total population of 2,412 individual mussels remaining, 97% of which are longer than 80mm in length. He concluded that there was unlikely to be any living mussels present that are younger than 30 years of age. However by 2019 it is estimated there were under 100 adult mussels remaining with little or no survival of juveniles. Key pressures include hydromorphological and agricultural impacts with sediment run off to the river causing detriment to mussel populations.

⁷ Saltmarsh Monitoring Project 2017-2018 Irish Wildlife Manuals 108 NPWS

2.5.2 Water Quality

The maintenance of favourable conservation status for freshwater species is dependent on good habitat quality requiring good water quality. Waterford is fortunate to have a number of high water quality status rivers which are known as Blue Dot Catchments and these include the Glasha, Nier, upper reaches of the Tay and Mahon, Dalligan, Upper Colligan, Glenshelane, Glenafallia, Glenakeefe, Monavugga and Owenashad. Maintenance of high water quality status in these river systems is imperative for the protection of spawning grounds for species such as salmon, lamprey, crayfish and pearl mussel that occur either within the headwaters or downstream in the catchment.

Map 3 below details surface water status across the City and County in the period 2013-2018. Key river catchments are the River Suir and Blackwater.

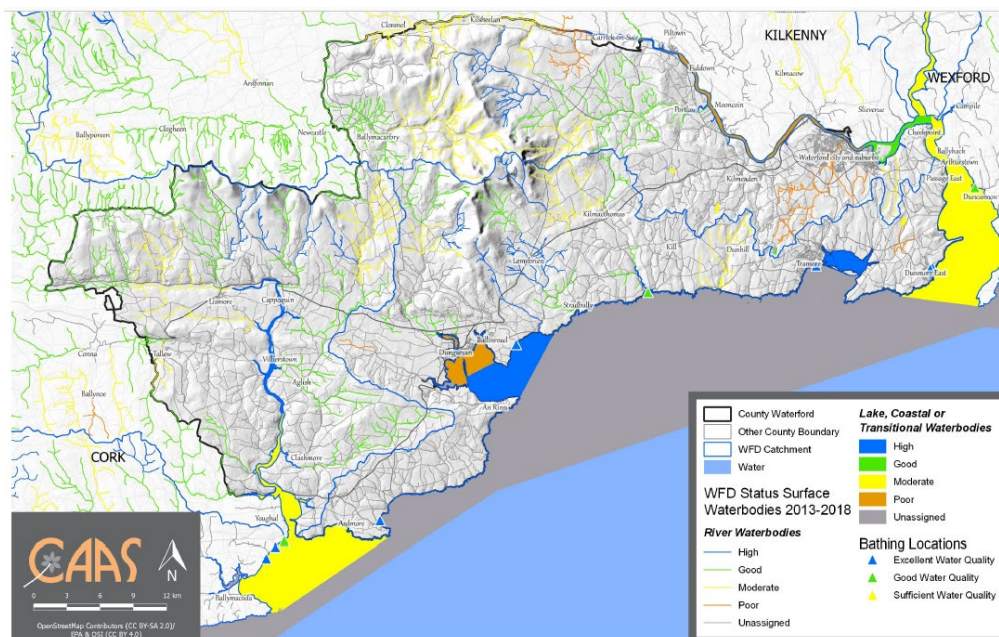


Figure 3.2 Surface Water Status (2013-2018)
CAAS for Waterford City and County Council

12

The status of most of the rivers within the county is classified as moderate, good and high, however sections of rivers (including the Suir, St. John's River, Leperstown Stream and Brickey) are identified as poor due to unsatisfactory ecological and /or physic- chemical status. The surface water status of transitional and coastal waterbodies within and surrounding the county is rated as high including Upper Blackwater Estuary; Tramore Back Strand and Dungarvan Harbour, Good (including Lower Suir Estuary, Little Island-Cheekpoint) and moderate (including Barrow/Suir/Nore Estuary, Lower Blackwater Estuary/Youghal Harbour; Youghal Bay and Waterford Harbour, however some transitional waterbodies (including Upper Suir Estuary; Middle Suir Estuary and Colligan Estuary) are rated as poor due to unsatisfactory ecological and /or physic- chemical status.

Significant pressures identified in Waterford Catchments by the EPA include agriculture, combined sewer overflows and river channel dredging in the River Suir catchment, expansion

of dairy industry and zero grazing operations with associated increased production of slurry in the Colligan-Mahon catchment, diffuse agriculture and elevated nutrients in the Blackwater catchment while in Blue Dot catchments there is evidence of agricultural land clearance in advance of next round of CAP and agri-environmental schemes.

The loss of excess nutrients and sediments, excess Phosphorous in rivers and lakes and nitrogen in estuaries and coastal water bodies can lead to proliferation of algae as evident in Waterford Estuary, Dungarvan Harbour and Ardmore Bay.

Other threats to site integrity include impacts from urban waste water; freshwater habitats and species may be impacted by run off from underperforming sewer networks and misconnections with private foul connections to storm sewers and overflows from combined sewers and storm waters.

In rural areas there is potential for significant effects on groundwater and surface waters from the cumulative impact of increasing rural housing and septic tanks not subject to monitoring and maintenance.

Changes to the physical course and structure of watercourses including dredging and channelling of rivers, land drainage and culverting can impact on the natural functioning of a watercourse with consequent impacts on freshwater habitat and species.

Sediment loss from Forestry and quarrying activities also has potential for significant effects on groundwater and surface waters.

Table 4 details water quality status for Waterford’s rivers and environmental pressures impacting that status. (Source EPA)

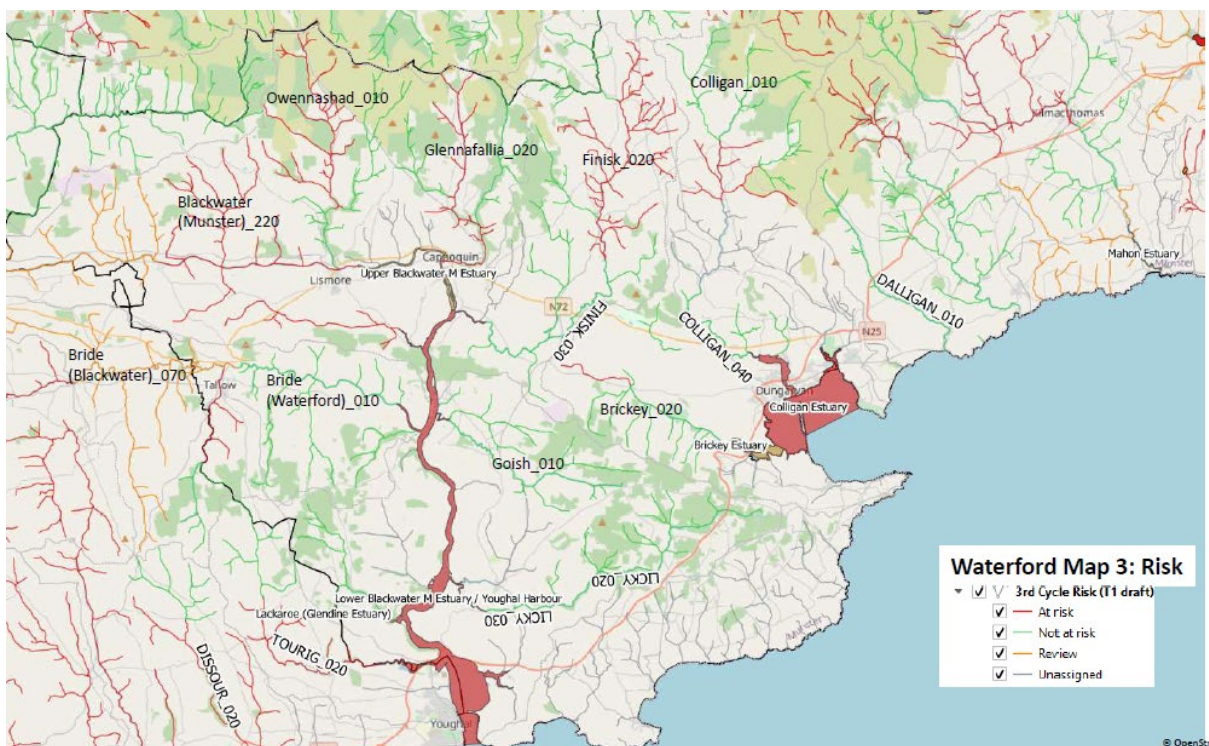
Waterbody	Type	WFD Surface Waterbody Status (2013-2018)
Suir_220	River	Poor-due to poor ecological/biological status. No pressures identified.
St. John’s_020	River	Poor-due to poor ecological/biological status. Under significant pressure from agricultural, urban run-off and urban wastewater sources.
Leperstown Stream_010	River	Poor-due to poor ecological/biological status. Under significant pressure from agricultural sources.
Brickey_010	River	Poor-due to poor ecological/biological status. Under significant pressure from agricultural and domestic waste water sources.
Upper Suir Estuary	Transitional	Poor-due to poor ecological/biological status. Under significant pressure from agricultural sources.
Middle Suir Estuary	Transitional	Poor-due to poor ecological/biological status. Under significant pressure from agricultural sources.

Colligan Estuary	Transitional	Poor-due to poor ecological/biological status. Under significant pressure from urban wastewater sources.
Suir_210	River	Moderate. No pressures identified.
Suir_200	River	Moderate. No pressures identified.
Suir_190	River	Moderate. No pressures identified.
Owbeg_010	River	Moderate. Under pressure from hydromorphological/anthropogenic sources.
Nier_020	River	Moderate. Under pressure from Forestry sources.
Nier_010	River	Moderate. Under pressure from hydromorphological/anthropogenic sources.
Mahon_020	River	Moderate. Under pressure from urban wastewater sources.
Halfway House Stream 010	River	Moderate. Under pressure from urban run-off sources.
Glenaboy_020	River	Moderate. Under pressure from urban run-off sources.
Finisk_020	River	Moderate. No pressures identified.
Dunhill_010	River	Moderate. Under pressure from domestic wastewater sources.
Colligan_020	River	Moderate. No pressures identified.
Clodiagh (Portlaw) 030	River	Moderate. No pressures identified.
Blackwater (Munster) 220	River	Moderate. Under pressure from extractive industry related sources.
Ballyshunnock	Lake	Moderate. Under pressure from agricultural sources.
Belle	Lake	Moderate. Under pressure from agricultural sources.
Knockaderry	Lake	Moderate. Under pressure from agricultural sources.
Lower Blackwater Estuary/Youghal Harbour	Transitional	Moderate. Under pressure from agricultural sources.
Barrow Suir Nore Estuary	Transitional	Moderate. No pressures identified.
Waterford Harbour	Coastal	Moderate. Under pressure from hydromorphological/anthropogenic sources.
Youghal Bay	Coastal	Moderate. Under pressure from agricultural sources.
Tourig_020	River	Good. No pressures identified.
Tourig_010	River	Good. No pressures identified.
Tay_030	River	Good. No pressures identified.
Tay_010	River	Good. Under pressure from agricultural and forestry sources.
Suir_180	River	Good. No pressures identified.
Suir_170	River	Good. No pressures identified.
Owennnashad_030	River	Good. No pressures identified.

Owennnashad_020	River	Good. No pressures identified.
Nier_030	River	Good. No pressures identified.
Morrageen_010	River	Good. No pressures identified.
Mahon_040	River	Good. No pressures identified.
Licky_030	River	Good. No pressures identified.
Licky_020	River	Good. No pressures identified.
Licky_010	River	Good. No pressures identified.
Goish_020	River	Good. Under pressure from agricultural sources.
Goish_010	River	Good. Under pressure from forestry sources
Glennafallia_020	River	Good. No pressures identified.
Glennafallia_010	River	Good. Under pressure from forestry sources.
Glendine (Blackwater)_010	River	Good. No pressures identified.
Glenaboy_010	River	Good. No pressures identified.
Finisk_030	River	Good. No pressures identified.
Finisk_010	River	Good. No pressures identified.
Colligan_040	River	Good. Under pressure from hydromorphological/anthropogenic sources.
Colligan_010	River	Good. No pressures identified.
Clodiagh (Portlaw)_050	River	Good. No pressures identified.
Clodiagh (Portlaw)_040	River	Good. No pressures identified.
Clodiagh (Portlaw)_020	River	Good. No pressures identified.
Bride (Blackwater)_070	River	Good. No pressures identified.
Blackwater (Munster)_210	River	Good. No pressures identified.
Araglin (Blackwater)_030	River	Good. No pressures identified.
Araglin (Blackwater)_020	River	Good. No pressures identified.
Araglin (Blackwater)_010	River	Good. No pressures identified.
Carraigavrantry	Lake	Good. Under pressure from forestry sources.
Lower Suir Estuary (Little Island-Cheekpoint)	Transitional	Good. Under pressure from agricultural sources
Tay_020	River	High. No pressures identified.
Monavugga_010	River	High. No pressures identified.
Mahon_010	River	High. No pressures identified.
Glenshelane_010	River	High. No pressures identified.
Glenakeeffe_010	River	High. No pressures identified.
Glasha(Waterford)_010	River	High. No pressures identified.
Farnane_010	River	High. No pressures identified.
Dalligan_010	River	High. No pressures identified.

Clodiagh (Portlaw) 010	River	Under pressure from agricultural and forestry sources.
Araglin(Colligan) 010	River	High. No pressures identified.
Upper Blackwater Estuary	Transitional	High. Under pressure from hydromorphological/anthropogenic sources.
Dungarvan Harbour	Coastal	High. No pressures identified.
Tramore Back Strand	Coastal	High. Under pressure from hydromorphological/anthropogenic sources.

The third cycle River Basin Management Plan 2021-2024 has identified a number of watercourses at risk of not achieving good water quality status detailed in Maps 4 and 5 below.



Map 4. Watercourses at risk West Waterford



Map 5. Watercourses at risk East Waterford

2.5.3 Habitat Loss and Species Disturbance

Many of Waterford’s scenic amenity and outdoor recreation areas are within the Natura 2000 network e.g. Comeragh Mountains, Dungarvan Harbour and Tramore Dunes and the Draft Development Plan recognises potential for further development of cycling and walking trails and Blueway related activity on the River Blackwater. The challenge is to maintain a high quality standard of visitor attraction whilst avoiding over tourism and degradation of the natural environment.

Since the onset of the 2020 Pandemic Waterford’s trail network has experienced greater levels of recreational use and demand for extension to the existing trails network . People are seeking greater access to the coast, rivers and uplands and on trails that accommodate physical distancing of 2m. Where trail networks encroach on sites designated for nature conservation there is potential for competing interests and loss of ecological value. This may manifest itself through trampling pressure and erosion of semi-natural habitat e.g. coastal heath, saltmarsh, dry heath and wet heath as users divert from single routes on a trail. The very construction of a trail can cause direct loss of habitat e.g. coastal grassland, dry heath and wet heath and bringing an increased level of usage to what were previously undisturbed areas that may impact on coastal nesting sites for species such as Chough and Peregrine Falcon.

In wetland areas during winter e.g. Dungarvan Harbour and Tramore Back Strand waders and wildfowl are easily disturbed by dogs off leads displacing birds from where they feed thus reducing their energy intake but also causing increase in energy expenditure by needing to fly off to an alternative feeding area where there may be competition for food from other bird species. Where there is constant displacement waterbirds may be disturbed so frequently that their displacement is equivalent to habitat loss. At its worst effect this may cause reduced

survival or reproductive success with significant consequences at population level for that species. Where new trails are created with night time lighting this can also impact on roosting and foraging areas for birdlife and bats. Supporting infrastructure such as car parks may also give rise to increased surface water flow which may impact on adjacent watercourses.

More significant ecological impacts can arise from motorised recreation such as use of scrambler bikes and quads in heather moorland and sand dunes whilst jet skis and power boating can cause disturbance to nesting waterbirds.

As Ireland aims to reduce carbon emissions in line with targets set in the 2021 Climate Action Act there will be an increase in renewable energy infrastructure including on and off wind turbines. This infrastructure has potential for significant effects on bird life through risk of bird strike and also disturbance to Cetaceans in marine areas.

2.5.4 Noise

The River Suir provides habitat for a number of freshwater species that are qualifying interests of the SAC. These are; Otter, Sea Lamprey, River Lamprey, Salmon and Twaite Shad. Twaite Shad are a member of the Clupeid Family, which are most sensitive to noise being fish with a swim bladder associated with hearing. Potential for significant effects on the species arises from construction noise that may impact their migration upstream to spawning grounds leading to risk of reduced reproductive success, decreased recruitment, mortality and overall population decline of the Annex 1 qualifying species.

2.6 Protection of species outside designated sites

While the designation of the Natura 2000 Network is based on the presence of Annex 1 habitats or species that meet a range of criteria for site designation it should be noted that these habitats and species are protected under the Habitats Directive wherever they occur even if ex-situ to the Natura 2000 Network. The presence of such habitats and usage by these species is key to the overall conservation status of the Natura 2000 Network and any potential for significant effects requires comprehensive assessment. Ecological pressures may arise from proposals for drainage and infilling of wet grasslands used by overwintering waders and wildfowl, zoning of lands for development that contain Annex 1 habitats or culverting of watercourses that are important for Otter or freshwater fish. Collation of data on these habitats and species is key to an informed Appropriate Assessment process.

Apart from Annexed habitats Article 10 of the Habitats Directive recognises the importance of ecological networks as corridors and steppingstones for wildlife, including for migration, dispersal and genetic exchange of species of flora and fauna. The Directive requires that ecological connectivity and areas of ecological value outside the Natura 2000 network are maintained and it recognises the need for the management of these areas through land use planning and development policies. Ecological corridors include linear features such as treelines, hedgerows, disused railway lines, rivers, streams, canals and ditches.

3. Appropriate Assessment Screening

Having reviewed the conservation status of qualifying interest species of Waterford’s Natura 2000 Network and pressures on the receiving environment the next step in the screening process was to review all policies and land use zonings in the Draft Waterford Development Plan 2022-2028 to assess potential for significant effects on the conservation objectives of the Natura 2000 network.

3.1 Development Plan Policy Screening

Waterford City and County Development Plan contains over 500 policies and the majority of policies have no implications for significant effects on the conservation objectives for the Natura 2000 Network. Core Strategy Objectives 02 and 17 make reference to UN Goals for Sustainable Development which frame the context for the Draft Plan. Chapter 9 of the Draft Plan – Climate Action, Biodiversity and the Environment sets out policies for protection of the Natura 2000 Network and the AA process and a number of policies throughout the plan are explicit in the requirement to satisfy the AA process in order to deliver that policy e.g. CS06, ECON22, ECON 16, SC36 and SC40. Policies for protection of Water Quality and Flood Plains and promotion of SuDS will in turn provide positive benefits for the Natura 2000 Network e.g. ECON 03, TRANS 59, UTL06, UTL09, UTL10, UTL11, UTL21,H18. Protecting the habitat confers protection for species within the habitat.

No policies were assessed as having potential for adverse impacts (permanent and irreversible) on the integrity⁸ of the Natura 2000 Network. However, a number of policies in the Pre-Draft Plan were assessed as having potential for significant effects on Natura 2000 sites and thus screened in for a Stage 2 Appropriate Assessment with recommended wording amendment to mitigate for potential for significant effects. These amendments were incorporated to the policies in the Draft Plan as detailed in table below.

Table 5. Policies in Draft Plan Screened in for AA

Policy Reference	Policy and mitigation amendment
W City 26	“We will ensure that the growth of the city takes place in an infrastructure led manner.....we support the development of transformational infrastructure such as an additional city centre river crossing and a downstream river crossing to link the R710 to the R711/N25 to the east of the city..... <i>Proposals for development shall ensure no adverse impacts on the integrity of the River Suir SAC.</i>
ECON 12	We will facilitate farm or rural resource related enterprise.....and likely impacts on amenity and the environment <i>and the Natura 2000 Network.</i>

⁸ whereby the ‘integrity of the site’ defined as the coherent sum of the site’s ecological structure, function and ecological processes, across its whole area, which enables it to sustain the habitats, complex of habitats and/or populations of species for which the site is designated.

ECON 23	In collaboration with local communities , we will promote, facilitate.....and deliver improvements to our tourism product....walking and cycling trails....service/rest facilities. <i>Proposals for development shall ensure no adverse impacts on ecological integrity including the Natura 2000 Network.</i>
TRANS 07	We will promote walking and cycling.....routes which are high quality, fully connected and inclusive <i>with no adverse impacts on ecological integrity including the Natura 2000 Network.....</i> or any update thereof.
TRANS10	We will continue to develop an integrated network of greenways/blueways and green/blue routes within Waterford and linking to adjoining counties. <i>Proposals for development shall ensure no adverse impacts on ecological integrity including the Natura 2000 Network.</i>
TRANS27	We will continue to support the development of the Port of Waterford and Waterford Airport to create , maintain and strengthen linkages with EU and international markets <i>subject to environmental considerations including no potential for adverse impacts on the Natura 2000 Network.</i>
TRANS 29	We will support improved berthing facilities for cruise ships subject to environmental considerations <i>including no potential for adverse impacts on the Natura 2000 Network.</i>
CM06	We will facilitate appropriate public access to the coast and the sustainable development of coastal walkways subject to ecological, <i>habitats directive</i> and climate risk assessments.
BGI10	To support the sustainable ..of Blueways ..environmental degradation. <i>Proposals for development shall ensure no adverse impacts on ecological integrity including the Natura 2000 Network.</i>
BGI11	We will work in collaboration...development potential of additional trails, whilst ensuring <i>no adverse impacts on ecological integrity including the Natura 2000 Network</i> and best practise.....and management.

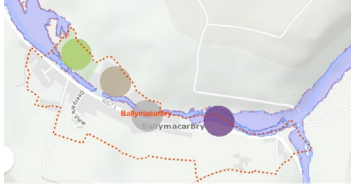

BG12	To develop comprehensive plans for all proposed recreational trails that incorporate planning and design of sustainable trails and supporting infrastructure such as car parking and lighting and in consultation with local communities to ensure no adverse impact on local land use and the environment.
------	---


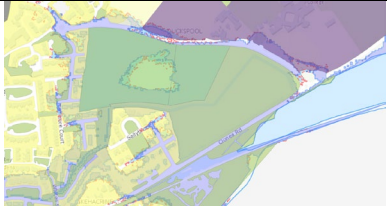
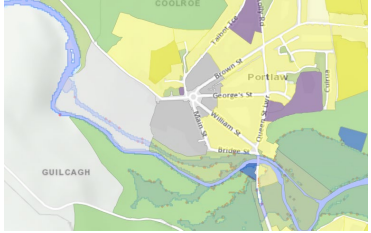
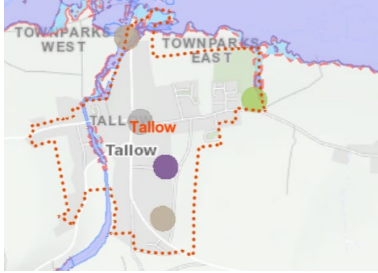
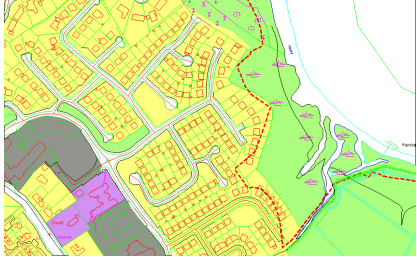
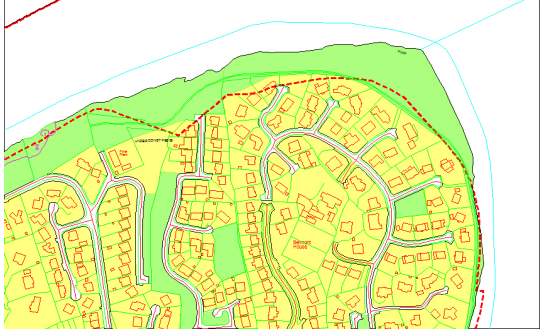
Some policies promote preparation of plans which will be subject to AA as part of that plan process e.g. ECON 17 (Estuary Framework Plan), UTL12 (Renewable Energy Strategy) and SC40 (Open Space Strategy). The existing Renewable Energy Strategy included as Appendix 7 to the Draft Plan was subject to AA Screening in 2016 and found not to have potential for significant effects on the Natura 2000 Network.

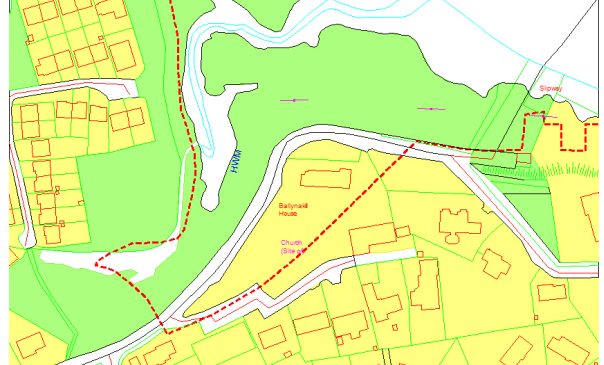
3.2 Land Use Zoning Screening

The Draft Development Plan Zoning was overlain on Natura 2000 Network mapping to assess potential for significant effects.

Table 6. Land Use Zoning Screened in for AA

 <p>Ballymacarbery</p>	<p>The identified settlement boundary takes account of the flood zone which encompasses the boundary of the SAC. An area zoned institutional in the previous Co. Development Plan which included part of the buffer zone to the river was previously built on subject to development consent in 2005.</p>
 <p>Bunmahon</p>	<p>No impact on Mid-Waterford Coast SPA .</p> <p>However, the identified settlement boundary includes site of Annex 1 Metalliferous Vegetation. It is a recommendation of this assessment that an objective be added to those cited for Bunmahon as follows; D0 11 To protect former mine spoil vegetation at Knockmahon that corresponds to the Annex 1 Habitat Calaminarian Grassland. There is no SAC designated at the site but there is an obligation to protect the Annex 1 habitat under the Habitats Directive.</p>

 <p>Cappoquin</p>	<p>The identified settlement boundary takes account of the flood zone which encompasses the boundary of the SAC.</p>
 <p>Dungarvan</p>	<p>Feeding ground for Annex 1 Brent Geese zoned as conservation, amenity, buffer space.</p>
 <p>Portlaoigh</p>	<p>Zoning encroaches on boundary of River Clodiagh (River Suir) SAC and to avoid potential for impacts on integrity should be re-zoned open space, buffer.</p>
 <p>Tallow</p>	<p>The identified settlement boundary takes account of the flood zone which encompasses the boundary of the SAC.</p>
 <p>Waterford City, Riverside, Ballinakill Downs</p>	<p>Historic overlap between the SAC boundary and residential land use zoning incorporating back gardens of 11 houses. SAC boundary overlaps the residential zoned area by approximately 0.5ha. Discrepancy was notified to NPWS in 2012.</p> <p>As the area is already built on (planning permission was approved for 57 houses in 1997 97/226 McNerney Construction and in 1996 for 12 houses 96/9888) a change of the residential zoning to open space would not have any effect on the SAC boundary at this site.</p>
 <p>Waterford City, King's Channel</p>	<p>Historic overlap between the SAC boundary and residential land use zoning incorporating back gardens of 8 houses. SAC boundary overlaps the residential zoned area for a length of approximately 240m. Discrepancy was notified to NPWS in 2012.</p> <p>Review of the 2000 aerial photographs shows housing in existence and it may be the case that permission was approved prior to advertisement of the River Suir SAC designation on 1st July 1999. The 1997 NHA</p>

	boundary survey noted adjacent housing development in the survey notes.
	Adjacent to the entrance to the Little Island Ferry, the SAC boundary runs through the property of Ballynakill House which is indicated on historic 6 inch maps. The site does not contain any of the habitat types for which the SAC is designated. Discrepancy was notified to NPWS in 2012.
Waterford City, Ballynakill House	

3.3 Population and Residential Zoning Objectives

The Waterford City and County Development Plan 2022-2028 aims to support growth in the Regional City in accordance with the RSES and NPF. A review of the County Development Plan 2012-2018 and City Development Plan 2013-2019 showed that of the existing area of zoned land in the City, approximately 247.51 ha remained undeveloped and c.40 ha of this is subject to extant permissions and in the County, approximately 442.45 ha remained undeveloped and 4.64 ha of this is subject to extant permissions.

Table 7 sets out the projected population targets for Waterford City and County in line with the RSES and NPF. These targets will ensure that Waterford city has the capacity to develop in its role as a regional economic driver for the wider city region, while the growth rate for Dungarvan is 50% that of the City enabling it to function as a key service town for West Waterford.

For rural areas, development plan objectives are to facilitate the housing requirements of the local rural community subject to satisfying site suitability and technical considerations and directing urban generated development to areas zoned and designated for housing in the adjoining villages and rural settlement nodes. Provision of single houses in the countryside will be based on economic or social need, siting and design and having regard to viability of smaller towns and rural settlements consistent with NPO19 of the National Planning Framework. The primary objective is to ensure consolidation and growth of smaller towns, rural settlements and settlement nodes.

Table 7. Envisaged target population for Waterford City and County in the RSES, NPF

	2016	2028	2031	Residential Zoned land required in Draft Plan (ha)
Waterford County	116,176	137,630	144,00	
Total City Area	51,616	66,285	70,995	
Waterford City & Suburbs	48,216	62,382	66,966	202

Dungarvan (including Ballinroad)	10,388	11,864	12, 337	25
Clonmel Environs	925	1,056	1,091	2
Tramore	10,381	11,549	11,873	19
Dunmore East	1,808	2,002	2,068	4
Portlaw	1,742	1,929	1,992	4
Lismore	1,374	1,521	1,572	3
Aggregate Rural (incl. Rural towns and villages)	41,342	45, 328	46,101	

In the context of Habitats Directive Assessment, potential impacts on Natura 2000 sites may arise where increased population growth cannot be served by water and wastewater infrastructure leading to deterioration of water quality standards and pollution which may compromise habitat quality and thereby affect the favourable conservation status of habitats and species. Table 8 details Waste Water Capacity, level of treatment and compliance in Waterford City, towns and villages. Review of this table indicates all settlements have adequate capacity for future growth with some constraints at Tallow, Ballyduff (West), Clonea-Power, Bunmahon, Annestown and Fenor. As Ballyduff (West), and Clonea-Power are located on SAC rivers containing Freshwater Pearl Mussel resolution of capacity is imperative prior to approval of any future loading or at least requirement for tertiary treatment at these locations.

In Waterford City, Dungarvan, Tramore, Lismore, Cappoquin, Portlaw, Kilmacthomas and Dunmore East there is adequate waste water capacity to cater for projected population growth in the Core Strategy. The current water quality status of the Lower River Suir Estuary is good and Waterford Harbour is moderate. Dungarvan Harbour and Tramore Bay are both rated high status. The Blackwater and Mahon are rated as moderate.

Table 8. Waste Water Capacity and level of Treatment in Waterford Settlements

WWTP	Level of Treatment	Compliance (Pass/Fail)	Parameter Failed	Cause of Exceedance and Significance of Results	Organic Capacities (Population Equivalent)		
					As Constructed	Collected Load (peak week)	Remaining
Waterford City	Secondary	Pass	N/A	Compliant with Wastewater Discharge Licence	190,600	116,576	74,024
Tramore	Secondary	Fail	Ammonia-Total (as N)mg/l	WWTP not designed for N removal. Not compliant with Wastewater Discharge Licence. Discharge does not have an observable impact on water quality.	20,000	15,183	4,817
Lismore	Tertiary	Pass	N/A	Compliant with Wastewater Discharge Licence	3,000	2,148	852
Cappoquin	Secondary	Pass	N/A	Compliant with Wastewater Discharge Licence	2,728	1,115	1,613
Tallow	Tertiary	Pass	N/A	Compliant with Wastewater Discharge Licence	2,186	2,295	0
Portlaw	Tertiary	Fail	Ortho-Phosphate (as P) unspecified mg/l Suspended solids mg/l	Exceedances relate to upgrade works to WWTP. Not compliant with Wastewater Discharge Licence. Ambient monitoring results meet required	2,500	1,796	704

				EQs. The EQs relate to the oxygenation and nutrient conditions set out in the Surface Water Regulations 2009. Discharge does not have an observable impact on water quality or negative impact on WFD Status.			
Kilmacthomas	Tertiary	Pass	N/A	Compliant with Wastewater Discharge Licence	2,110	1,173	937
Baile na nGall	Secondary	Pass	N/A	Compliant with Wastewater Discharge Licence	1,600	30	1,570
Ardmore	Secondary	Pass	N/A	Compliant with Wastewater Discharge Licence	2,934	1,312	1,622
Dunmore East	Secondary	Pass	N/A	Compliant with Wastewater Discharge Licence	8,991	3,436	5,555
Dungarvan	Secondary	Pass	N/A	Compliant with Wastewater Discharge Licence	25,000	20,103	4,897
Stradbally	Secondary	Pass	N/A	Compliant with Wastewater Discharge Licence	1,914	563	1,351
Rural Villages					WWTP Capacity		Spare Capacity
Aglish					800		300
Checkpoint					750		432
Villierstown					700		400
Kill					750		450

Clashmore					Capacity available		Currently envisaged there is capacity available
Dunhill					500(ICW)		300
Ballyduff Upper (West)					Septic Tank near capacity		200 possibly
Annestown					Septic Tank at capacity		
Fenor					Septic Tank at capacity		
Clonea Power					Septic Tank at capacity		
Rathgormack					Septic Tank		
Tooraneena					ICW		
Ballymacarbry							Currently envisaged there is capacity available
Rural Networks							
Passage East/Crooke							Currently envisaged there is capacity available
An Rinn (Heilbhc/Maoil na Choirne/Baile na nGall//Old Parish)					1,600		630
Kilmeaden (Ballyduff Lower (east))					1,142		883
Lemybrien/Kilrossanty					Kilrossanty- very limited		Small Towns and Villages

					capacity available Lemybrien-no capacity available		Growth Programme has announced an investment in the WWTP which will facilitate an upgrade to cater for capacity as outlined in the CDP .
Bonmahon/Knockmahon					3 Septic Tanks at capacity		

3.4 Infrastructure Projects

Some policies in the Draft Development Plan set a framework for future infrastructure development that may impact on Natura 2000 sites, e.g. policies supporting development of Waterford Port, Waterford Airport, Dunmore East Marina, breakwater and port, City Centre river crossings and a down-stream river crossing to link the R710 to the R711/N25. Any potential for significant effects on the Natura 2000 Network shall be assessed as per the policies and objectives set out in Chapter 9 which require compliance with the AA process.

3.5 Settlement Objectives

Appendix 2 details specific development objectives for the range of settlements across the county. Explicit objectives for protection of the Natura 2000 Network and consideration of Articles 6 and 10 of the Habitats Directive are cited for Ballyduff D01, Cappoquin D01, Villierstown D01 (relevant to River Blackwater SAC), Portlaw D03 (River Clodiagh SAC) and Tramore D04 (Tramore Dunes and Backstrand SAC and SPA). An objective (D01) for Clonea-Power requiring availability of appropriate waste water treatment system prior to any further residential development is also positive in the interests of protecting the River Clodiagh SAC. It is a recommendation of this assessment that a similar objective be included for Ballyduff West given that the septic tank is near capacity and the Blackwater is designated for Freshwater Pearl Mussel. It is also a recommendation of this assessment that an objective be added to those cited for Bunmahon as follows; D0 11 To protect former mine spoil vegetation at Knockmahon that corresponds to the Annex 1 Habitat Calaminarian Grassland. There is no SAC designated at the site but there is an obligation to protect the Annex 1 habitat under the Habitats Directive. It is also recommended that the following be added to the General Policy Objectives; To protect the favourable conservation status of sites designated for nature conservation and ensure compliance with Article 6 and Article 10 of the Habitats Directive. This shall mitigate for objectives relating to development of riverside/estuary walkways that may have potential for significant effects e.g. D01 Dungarvan – development of a linear walkway along the Colligan Estuary.

3.6 Flood Risk and Sea –Level Rise

A Strategic Flood Risk Assessment was prepared as part of the Development Plan Review Process and recommendations integrated into policies of the Plan. The Waterford City Flood Alleviation Scheme has addressed flood areas through the construction of flood defences along the south quays of the River Suir from Grattan Quay to Adelphi Quay and to along the St John's River as far as the Inner Ring Road. Overlay of the flood risk zones on the River SACs demonstrate overlap of Flood Risk Zones with the SAC. Policy UTL 10 sets out a requirement for site specific flood risk assessment which also contributes to protecting the SAC and an adjacent buffer.

Climate Adaptation and building resilience is a key component of the Draft Development Plan in recognition of climate change impacts that are presenting increased intensity and frequency of storm events, increased periods of flooding and drought and rising sea level. A coastal

county such as Waterford is at risk from climate change events ; climate adaptation measures and nature based solutions are required to be inherent to all future land use planning and development proposals. Waterford City and County Council published a Climate Adaption Plan in 2019 which seeks to implement best practices and incorporate solutions that will meet climate change adaptation requirements and service the needs of the communities. With regard to the Natura 2000 Network coastal sites such as Tramore Dunes are at risk from increasing coastal erosion and loss of habitats that are qualifying interests for the site such as dunes and saltmarsh.

3.7 Impacts on Natura sites within 15km of Waterford City and County

There are three Natura 2000 sites located within 15km of County Waterford. All the River SACs within the county (Blackwater, Lower River Suir, Barrow and Nore,) traverse the county boundary with Counties Cork, South Tipperary, Waterford City and Kilkenny. No significant impacts arising from the Draft Development Plan are anticipated upstream in these river corridors. Other Natura 2000 sites within 15km of the county’s boundary such as Ballymacoda SPA and Hook Head SAC are self-contained habitats that will not be directly affected by policies in the Draft Development Plan.

4. Summary Screening Assessment

Table 9 below presents a summary screening of potential for adverse impacts on the Natura 2000 Network from the Draft Development Plan Policies and Land Use Zonings. Where there is potential for the Draft Plan to give rise to impacts on site integrity this is mitigated by policies for protection of the Natura 2000 Network and compliance with the AA process in Chapter 9 of the plan.

Table 9. Threats to Site Integrity of the Waterford Natura 2000 Network

Natura 2000 site	Threat to Site Integrity	Potential for Significant effects/adverse impact on integrity arising from Draft Development Plan	Mitigation
River Suir SAC	Water quality Loss of Blue Catchment Status in tributary rivers. Nutrient and sediment runoff FPM Habitat Noise. Erosion of Saltmarsh	City Infrastructure development including river crossings. Increase in population. Proliferation of unmaintained and unmonitored septic tanks.	Policies in Draft Plan seeking protection of Natura 2000 Network and Water Quality. Adequate WWTP capacity for population targets in Waterford City. Rural Settlement Strategy promoting consolidation of towns and villages.

River Blackwater SAC	Water quality Nutrient and sediment runoff Loss of Blue Catchment Status in tributary rivers. FPM Habitat Recreational Trails Invasive Species	Agricultural intensification Recreational Trails Proliferation of unmaintained and unmonitored septic tanks.	Policies in Draft Plan seeking protection of Natura 2000 Network and Water Quality. Rural Settlement Strategy promoting consolidation of towns and villages.
River Nore & Barrow (Waterford Estuary SAC)	Water quality Nutrient and sediment runoff	Expansion of Cruise Ship Tourism	Policies in Draft Plan seeking protection of Natura 2000 Network and Water Quality. Adequate WWTP capacity for population targets.
Comeragh Mountains SAC	Recreational Trails Encroachment of Bracken Change in vegetation Climate impacts causing peat haggging	Recreational Trails	Policies in Chapter 9 of Draft Plan seeking protection of Natura 2000 Network.
Tramore Dunes and Back Strand	Recreational Trails Development of Waterford Airport Climate Impacts	Recreational Trails	Policies in Draft Plan seeking protection of Natura 2000 Network and Water Quality. Adequate WWTP capacity for population targets.
Ardmore Head SAC	Recreational Trails Lack of grazing leading to vegetation change	Recreational Trails	Policies in Chapter 9 of Draft Plan seeking protection of Natura 2000 Network.
Nire Valley Woodlands SAC	Natural woodland decline	None Arising	Policies in Chapter 9 of Draft Plan seeking protection of Natura 2000 Network.
Glendine Woods SAC	Natural woodland decline	None Arising	Policies in Chapter 9 of Draft Plan seeking protection of Natura 2000 Network.
Helvick Head SAC	Vegetation Change due to atmospheric N deposition	None Arising	Policies in Chapter 9 of Draft Plan seeking protection of Natura 2000 Network.
Dungarvan Harbour SPA	Storm water runoff from new residential	Increase in population Recreational Trails	Policies in Chapter 9 of Draft Plan seeking

	development near Colligan Estuary. Aquaculture Loss of feeding grounds in areas SPA adjacent to		protection of Natura 2000 Network and Water Quality. Zoning changes in Duckspool.
Tramore Back Strand SPA	Disturbance to foraging and roosting wildfowl and waders from recreational users	Increase in population	Policies in Draft Plan seeking protection of Natura 2000 Network and Water Quality. Adequate WWTP capacity for population targets.
Mid-Waterford Coast SPA	Recreational Trails Loss of grassland due to intensification of agriculture	Recreational Trails	Policies in Draft Plan seeking protection of Natura 2000 Network and Water Quality.
Ballyquinn-Helvick SPA	Loss of grassland due to intensification of agriculture	None Arising	Policies in Draft Plan seeking protection of Natura 2000 Network and Water Quality.
Blackwater Callows SPA	Recreational Trails Loss of grassland due to intensification of agriculture	Recreational Trails	Policies in Draft Plan seeking protection of Natura 2000 Network and Water Quality.
Blackwater Estuary SPA	Water Quality Recreational Trails	Recreational Trails	Policies in Draft Plan seeking protection of Natura 2000 Network and Water Quality.

4.1 Other Plans and Projects and in-combination effects

The AA process requires consideration of other plans and projects that may contribute in combination with the subject plan to give rise to significant effects or adverse impacts to the integrity of the Natura 2000 Network in Waterford. Relevant Plans in this context include;

Tipperary, Kilkenny, Wexford and Cork County Development Plans
Regional Spatial and Economic Strategy for the Southern Region
River Basin Management Plan for Ireland 2021-2028
Climate Change Adaptation Strategy 2019
Catchment Flood Risk Management Plans

Relevant Projects include;

Development of North Quays SDZ

Sustainable Transport Bridge

River Suir Flood Defences West of Waterford Railway Station

Development of Mount Congreve Visitor Attraction

Development of a SE Greenway network linking Waterford City with South Kilkenny, New Ross and Rosslare.

Fáilte Ireland Activity Centre Tramore and Ardmore

As the Draft Plan itself will not have any adverse impacts on the integrity of the Natura 2000 Network and with reference to the AA of other plans and projects listed above it is considered there is no potential for in-combination impacts to adversely affect the integrity of the Natura 2000 Network in Waterford.

5. Screening Assessment of Proposed Material Amendments

Following public consultation of the Draft City and County Development Plan 2022-2028 between June 18th and August 30th 2021 a total of 479 submissions were received and reviewed to inform proposed amendments to the Draft Plan. These are detailed in the Chief Executive's Report on the Draft Plan Consultation published in November 2021. Following a 12 week review of the Chief Executive's Report the Elected Members approved a number of proposed material amendments to the Draft Plan which were issued for public consultation over a four week period from March 3rd to April 1st 2022. All proposed material amendments were subject to AA Screening (Appendix 1 and Appendix 2) and Table 10 details amendments that screened in for potential for significant effects on the Natura 200 Network and mitigation required to ensure no adverse impacts on the integrity of Waterford's nine SACs and six SPAs.

Potential for significant effects could not be ruled out for development in proximity to the River Suir in Waterford City due to likelihood of increased surface water discharge arising from development of the South Quays (MA186 S19), Ard Rí (MA186 S17), Brooks Site (MA186 S09) and zoning for housing development at Knockboy (MA327) and Islandview (MA354) where discharge of surface water to combined storm water outfall has caused foul water overflow in the past. Extension of the WSV Railway line from Bilberry to Grattan Quay (MA 129 BG20) may involve encroachment through piling on the mudflats of the SAC. Intensification of the cruise industry (MA52 ECON 22) may require more frequent dredging in Waterford Estuary. In Clonmel Environs a change of zoning from High Amenity to Strategic Residential Reserve (MA 203) and an objective for a river crossing from Kilganny to Moanagariff raise potential for significant effects on the River Suir SAC. However, the plan contains robust and comprehensive policies for protection of the Natura 2000 Network and assessment of projects along with robust policies for protection of water quality supporting objectives under the Habitats and Water Framework Directives. It is considered these policies will mitigate against potential for adverse impacts on the integrity of the Natura 2000 Network. These policies will also mitigate against potential for adverse impacts on the integrity of the River Blackwater (MA161), Waterford Estuary (MA162) and River Clodiagh (MA186 PTS01). Zoning of an area for tourism adjacent to Tramore Sand Dunes (MA294) recognises the popularity of this amenity area for residents and visitors to Tramore. Policy BDO7 supports

the preparation and implementation of management plans for the conservation of Natura 2000 sites which will mitigate for impacts on this area. Other material amendments screened in for AA include development of trails (MA 124, MA128) and renewable energy (MA77 and MA78). Project proposals supported by these policies will also be subject to the range of robust policies for protection of and assessment of impacts on the Natura 2000 Network set out in Chapter 9 along with Development Management Standards of the Plan. Material amendments have also been screened through the SEA and SFRA processes further strengthening the environmental resilience and compliance of the plan.

Table 10. Proposed Material Amendments Screened in for AA

Material Amendment Reference No.	Potential for effects	Mitigation
28. Amend paragraph 4 in Section 3.3.9 of Chapter 3 to include river leisure use such as a Maritime Museum and Public Baths	Uncertain potential for significant effects on the conservation objectives for the qualifying interests of River Suir SAC	Policies BD05 and BD06 to ensure protection of the favourable conservation status and integrity of the Natura 2000 Network.
52. Amend paragraph 11 of Section 4.10 Tourism and amend new Policy Objective ECON 22 in Chapter 4 ‘Tourism Accommodation/ Camp Sites’ including; To maximise the potential of Waterford as a cruise ship destination.	Intensification of cruise ship traffic to Waterford Harbour could require dredging with consequent impacts on water quality and fish species.	Policies BD05 and BD06 to ensure protection of the favourable conservation status and integrity of the Natura 2000 Network. Policies C&M06, BG09 and BGI I10 to ensure protection of the favourable conservation status and integrity of the Natura 2000 Network. Policies WQ01 and WQ02 to ensure protection of water quality.
77. Amend paragraph 4 in Section 6.4 ‘Energy’ Chapter 6	Potential for impacts on coastal seabirds that are qualifying interests of Waterford’s SPA network.	Policy BD08 to ensure protection of the favourable conservation status of Annexed species and integrity and habitat value of sites.
78. Amend Section 6.6 ‘Renewable Energy’ Chapter 6	Potential for impacts on coastal seabirds that are qualifying interests of Waterford’s SPA network.	Policy BD08 to ensure protection of the favourable conservation status of Annexed species and integrity and habitat value of sites.
80. Amend policy UTL 06	Potential for significant effects on the conservation	Policies BD02 and BD03 to ensure

	objectives for the qualifying interests of river SACs.	protection of water quality and the favourable conservation status and integrity of the Natura 2000 Network. Policies WQ01 and WQ02 to ensure protection of water quality.
124 Amend Policy Objective BGI 06 Chapter 10	Uncertain potential for significant effects on the conservation objectives for the qualifying interests of River Suir SAC	Policies BD05 and BD06 to ensure protection of the favourable conservation status and integrity of the Natura 2000 Network.
128 Amend 'Amenity Management Policy Objectives' in Section 10.5	Construction of trails in or near Natura 200 sites can cause direct loss of habitat e.g. coastal grassland, dry heath and wet heath and bringing an increased level of usage to what were previously undisturbed areas that may impact on bird nesting sites	Policies BD05 and BD06 to ensure protection of the favourable conservation status and integrity of the Natura 2000 Network.
129 BG20 Extension of the Waterford Suir Valley Railway from Bilberry to Waterford (Grattan Quay).	Uncertain potential for significant effects on the conservation objectives for the qualifying interests of River Suir SAC	Policies BD05 and BD06 to ensure protection of the favourable conservation status and integrity of the Natura 2000 Network.
149 Amend DM Policy Objective DM 3	Uncertain potential for significant effects on Annex 1 species such as Peregrine Falcon that may use nesting sites outside the SPA Network.	Policy BD08 to ensure protection of the favourable conservation status of Annexed species and integrity and habitat value of sites.
161 Cappoquin CPDO9	Uncertain potential for significant effects on the conservation objectives for the qualifying interests of River Blackwater SAC	Policies BD05 and BD06 to ensure protection of the favourable conservation status and integrity of the Natura 2000 Network
162 Clonmel CE D06	Potential for significant effects on the conservation objectives for the qualifying interests of River Suir SAC	Policies BD05 and BD06 to ensure protection of the favourable conservation status and integrity of the Natura 2000 Network.

		Policies WQ01 and WQ02 to ensure protection of water quality.
169 PECDO10 Extend the settlement boundary of the village to the north.	Uncertain potential for significant effects on the conservation objectives for the qualifying interests of Waterford Estuary depending on availability of WWT capacity to cater for expanding population.	Policies WQ01 and WQ02 to ensure protection of water quality. Policies BD05 and BD06 to ensure protection of the favourable conservation status and integrity of the Natura 2000 Network.
174 WCD029 DO29 – Ballinakill – New residential lands to the east of Kings Channel Estate (Island Land Cul-De Sac) Local Road L55289 and north of Bal;inakill Crescent Local Road L 55285 may facilitate Low Density Residential Development/ Serviced Sites.	Uncertain potential for significant effects on the conservation objectives for the qualifying interests of River Suir SAC from increase discharge of surface water to combined storm water outfall.	Policies BD05 and BD06 to ensure protection of the favourable conservation status and integrity of the Natura 2000 Network. Policies WQ01 and WQ02 to ensure protection of water quality.
174 WCD032 DO32 – Knockboy – Sections of new residential lands to the north of the Dunmore Road R683 at the River Cottage can facilitate Low Density Residential Development/ Serviced Sites.	Uncertain potential for significant effects on the conservation objectives for the qualifying interests of River Suir SAC from increased discharge of surface water to combined storm water outfall.	Policies BD05 and BD06 to ensure protection of the favourable conservation status and integrity of the Natura 2000 Network. Policies WQ01 and WQ02 to ensure protection of water quality.
186 BOS1 Ballyduff	Uncertain potential for significant effects on the conservation objectives for the qualifying interests of River Blackwater SAC from increase discharge of surface water in a flood zone.	Policies BD02 and BD03 to ensure protection of water quality and the favourable conservation status and integrity of the Natura 2000 Network. Policies WQ01 and WQ02 to ensure protection of water quality.
186 PTOSO1 Portlaw	Uncertain potential for significant effects on the conservation objectives for the qualifying interests of River Clodiagh SAC.	Policies BD05 and BD06 to ensure protection of the favourable conservation status and integrity of the

		Natura 2000 Network. Policies WQ01 and WQ02 to ensure protection of water quality.
186 OPSO6	Uncertain potential for significant effects on the conservation objectives for the qualifying interests of River Suir SAC.	Policies BD05 and BD06 to ensure protection of the favourable conservation status and integrity of the Natura 2000 Network. Policies WQ01 and WQ02 to ensure protection of water quality.
186 OPSO9	Uncertain potential for significant effects on the conservation objectives for the qualifying interests of River Suir SAC.	Policies BD05 and BD06 to ensure protection of the favourable conservation status and integrity of the Natura 2000 Network. Policies WQ01 and WQ02 to ensure protection of water quality.
186 OPS17	Uncertain potential for significant effects on the conservation objectives for the qualifying interests of River Suir SAC.	Policies BD05 and BD06 to ensure protection of the favourable conservation status and integrity of the Natura 2000 Network. Policies WQ01 and WQ02 to ensure protection of water quality.
186 OPS19	Uncertain potential for significant effects on the conservation objectives for the qualifying interests of River Suir SAC from increased discharge of surface water.	Policies BD05 and BD06 to ensure protection of the favourable conservation status and integrity of the Natura 2000 Network. Policies WQ01 and WQ02 to ensure protection of water quality.
354 Islandview	Uncertain potential for significant effects on the conservation objectives for the qualifying interests of River Suir SAC from	Policies BD05 and BD06 to ensure protection of the favourable conservation status and integrity of the

	increased discharge of surface water to combined storm water outfall.	Natura 2000 Network. Policies WQ01 and WQ02 to ensure protection of water quality.
327 Knockboy	Uncertain potential for significant effects on the conservation objectives for the qualifying interests of River Suir SAC from increased discharge of surface water to combined storm water outfall.	Policies BD05 and BD06 to ensure protection of the favourable conservation status and integrity of the Natura 2000 Network. Policies WQ01 and WQ02 to ensure protection of water quality.
294 Tramore	Uncertain potential for significant effects on the conservation objectives for the qualifying interests of Tramore Sand Dunes and Back Strand SAC and SPA.	Policies BD05 and BD06 to ensure protection of the favourable conservation status and integrity of the Natura 2000 Network. Policy BD07 – preparation of management plans for Natura 2000 sites.
203 Clonmel Environs	Uncertain potential for significant effects on the conservation objectives for the qualifying interests of River Suir SAC from increase discharge of surface water in a flood zone.	Policies BD05 and BD06 to ensure protection of the favourable conservation status and integrity of the Natura 2000 Network. Policies WQ01 and WQ02 to ensure protection of water quality.

6. Screening Assessment of proposed modifications to final plan

A total of 188 submissions were received during the public consultation stage on the Material Amendments between March 3rd and April 1st 2022. The Chief Executive's Report detailing response to submissions was issued to the elected members on April 22nd 2022. Having considered the proposed material alterations and the Chief Executive's Report, the elected members resolved to make the Plan with a number of proposed amendments. AA screening was carried out on 9 land use zoning modifications and none screened in for AA. The final Waterford City and County Development Plan 2022-2028 was adopted by Waterford City and County Council on June 7th 2022.

Table 11. Screening of proposed amendments to Draft Waterford City and County

Development Plan 2022-2028

Reference	Location	AA Screening
02/(MA 251/UID3675)	Lemybrien -extend settlement boundary to zone 0.7 ha rural village lands to the S of N25.	No potential for significant effects on the conservation objectives for the qualifying interests of Comeragh Mountains SAC or the wider Natura 2000 Network. Screens out for AA.
03 (MA 268/ UID 3685)	Portlaw – Spring Hill Zone 0.27 ha lands R1 outside flood zones A and B	Adequate WWT capacity available to cater for population targets in the plan .No potential for significant effects on the conservation objectives for the qualifying interests of River Suir SAC or the wider Natura 2000 Network. Screens out for AA.
04 (MA 225 UID 3666)	Dungarvan- Ballinroad Rezone 1.9ha from Strategic Residential Reserve (SRR) to New Residential (R1)	No potential for significant effects on the conservation objectives for the qualifying interests of Dungarvan Harbour SPA or the wider Natura 2000 Network. Screens out for AA.
05/ (MA 211 UID 3669)	Dungarvan- Abbeyside Rezone 2ha from Open Space (OS) to New Residential (R1) Phase 2 lands.	No potential for significant effects on the conservation objectives for the qualifying interests of Dungarvan Harbour SPA or the wider Natura 2000 Network. Screens out for AA.
06/ (MA 222 UID 3653)	Dungarvan- Duckspool Rezone 2.8ha from Open Space (OS) to Strategic Residential Reserve (SRR).	No potential for significant effects on the conservation objectives for the qualifying interests of Dungarvan Harbour SPA or the wider Natura 2000 Network. Screens out for AA.
07 (MA 223 UID 3664)	Dungarvan- An Crompán Zone 1.6 ha from High Amenity (HA) to Strategic	No potential for significant effects on the conservation objectives for the qualifying interests of Dungarvan Harbour SPA or the wider Natura 2000 Network. Screens out for AA.

	Residential Reserve (SRR)	
08 (MA 281 UID 3688)	Tallow Extend the settlement boundary by 3.75 ha to the west in Townparks West.	No potential for significant effects on the conservation objectives for the qualifying interests of River Blackwater SAC or the wider Natura 2000 Network. Screens out for AA.
09/MA 284 UID 3659	Tramore- Newtown Zone 0.47 from Open Space (OS) to Existing Residential (RS)	No potential for significant effects on the conservation objectives for the qualifying interests of Mid-Waterford Coast SPA, Tramore Dunes SAC or Tramore Back Strand SPA. Screens out for AA
11/MA205 UID 3700 ⁹	Crooke Extend the settlement boundary by 0.32 ha	Currently envisaged there is wwt capacity available. No potential for significant effects on the conservation objectives for the qualifying interests of Waterford Harbour SAC. Screens out for AA
12/MA 186	DTOS01 Glanbia Site, Davitt's Quay, Dungarvan Retail development may be appropriate on site where compliant with the retail strategy.	No potential for significant effects on the conservation objectives for the qualifying interests of Dungarvan Harbour SPA or the wider Natura 2000 Network. Screens out for AA.
13/MA 22	Insertion of amended narrative , Table 2.3 and phasing maps within Section 2.14	Screens out for AA.
14/ MA 158	Insertion of footnote to Table 11 Zoning Matrix re social and affordable housing.	Screens out for AA.

⁹ Note Resolution No 10 was withdrawn on day of Adoption of Development Plan and thus not include in screening of final modifications to the plan.

7. Conclusion

A Habitats Directive Screening Assessment was carried out on the Draft Waterford City and County Development Plan 2022-2028, proposed material amendments to the plan and proposed final modifications to the plan. A review of conservation objectives and threats to site integrity for the range of Natura 2000 sites in the city and county was undertaken to identify sites that may be impacted by policies, objectives and land use zonings in the Draft Development Plan, proposed material amendments and proposed amendments to the final plan. Zoned settlements that are located adjacent to river and coastal SACs and SPAs were considered to be the key areas for assessment. Threats to site integrity such as infrastructure, habitat loss and species disturbance, water quality and protection of annexed species and habitats outside the designated boundaries of the Natura 2000 Network were identified as key issues in maintaining the favourable conservation status of the network. The majority of policies, objectives and zonings in the Draft Plan and proposed material amendments screened out for AA. However, a number of policies and proposed material amendments were assessed as having potential for significant effects on Natura 2000 sites and screened in for a Stage 2 Appropriate Assessment. Draft Plan policies were reviewed with recommended wording amendments to mitigate for potential for significant effects. Material amendments were reviewed to assess the potential for adverse impacts on the integrity of Waterford's Natura 2000 Network. Review of the Settlement Strategy shows there is adequate waste water capacity to cater for projected population growth in Waterford City, Dungarvan, Tramore, Lismore, Cappoquin, Portlaoise, Kilmacthomas and Dunmore East. Infrastructure projects and future plans within the framework of the Draft Development Plan and proposed material amendments will be subject to AA in their own right and policies and development management standards of the plan requiring environmental compliance were considered robust and comprehensive to ensure no adverse impacts on the integrity of Natura 2000 sites.

The NIR has examined and analysed with best scientific knowledge the potential sources and pathways for adverse impacts on the Natura 2000 Network in Waterford. It is objectively concluded following an examination, analysis and evaluation of the potential impacts associated with the Draft Plan and material amendments to the draft plan that the Waterford City and County Development Plan 2022-2028 will not adversely affect the integrity of the Natura 2000 Network either alone or in-combination with other plans or projects.

This assessment should be read in conjunction with the Waterford City and County Development Plan 2022-2028 and the accompanying Environmental Report prepared in fulfilment of the SEA process.

Bibliography

Bryophytes and Metallophyte Vegetation on Metalliferous Mine-Waste in Ireland. Report to NPWS of a Survey in 2008 by D.T. Holyoak.

Department of Environment, Heritage and Local Government (2008) The Status of EU Protected Habitats and Species in Ireland

Draft Sub-Basin Management Plans for Freshwater Pearl Mussel in - Blackwater, Licky and Clodiagh Catchments

EPA (2020) Ireland's Environment 2020

European Commission (2018) Assessment of plans and projects significantly affecting Natura 2000 sites- methodological guidance on the provisions of Article 6(3) and 6 (4) of the Habitats Directive 92/43/EEC.

European Commission (2002) Managing Natura 2000 sites The provisions of Article 6 of the Habitats Directive 92/43/EEC.

National Survey of Native Woodland 2003-2008

National Survey of Upland Habitats (Pilot Survey Phase, 2009-2010) Site Report No. 3:
Comeragh Mountains cSAC

Saltmarsh Monitoring Project 2018-2019

Southern River Basin District Draft Management Plan (2018-2021)

The Status of EU Protected Habitats and Species in Ireland 2019

Waterford Chough Survey 2008

Wildlife Manual 78 The Irish Semi-natural Grasslands Survey 2007-2012

Wildlife Manual 105 Calaminarian Grassland Monitoring 2018

Wildlife Manuals 108 Saltmarsh Monitoring Project 2017-2018

Saltmarsh Monitoring Project 2007-2008

Appendix 1 Screening of Material Amendments to Draft Plan

Chapter	Amendment Ref	AA Screening Determination
1. Waterford and the Development Plan	1- Text changes to the Vision statement in Section 1.1	Screens out for AA
	2-Text insertion at end of Section 1.1	Screens out for AA
	3-Text changes to the Policy Context in Section 1.3.1	
	4-Text changes to the Policy Context in Section 1.3.2	Screens out for AA
	5-Text changes to the Policy Context in Section 1.3.3	Screens out for AA
	6. Amend paragraph 2 of Section 1.6	Screens out for AA
	7. Insert image in Section 1.6	Screens out for AA
	8. Text changes Section 1.7.1	Screens out for AA
	9. Text changes Section 1.7.2	Screens out for AA
	10. Text changes Section 1.7.3	Screens out for AA
	11. Text changes Section 1.7.4	Screens out for AA
	12. Text changes Section 1.7.5	Screens out for AA
2. Spatial Vision and Core Strategy	13. Text additions to Section 2.0	Screens out for AA
	14. Amend Section 2.1 'Core Strategy Strategic' Aim No 13	Screens out for AA

	15. Amend paragraph 3 of Section 2.2 'Core Strategy Strategic'	There is adequate waste water capacity to cater for projected population growth in the Core Strategy. No potential for significant effects on the conservation objectives of the qualifying interests of the Natura 2000 Network. Screens out for AA. Screens out for AA
	16. Amend paragraph 3 of Section 2.8	Screens out for AA
	17. Amend Section 2.9	Screens out for AA
	18. Amend Section 2.10	Screens out for AA
	19. Amend Section 2.10	Screens out for AA
	20. Amend Section 2.12	Screens out for AA
	21. Amend Section 2.13	Screens out for AA
	22. Amend Section 2.14	Screens out for AA
	23. Amend narrative table 2.3 and phasing maps in Section 2.14	Screens out for AA
	24. Amend Policy CS16	Screens out for AA
3. Waterford City and MASP	25. Amendments to Table 3.1 and Section 3.2	No potential for significant effects on the conservation objectives for the qualifying interests of the Natura 2000 Network. Screens out for AA
	26. Text addition in Section 3.3.1	Screens out for AA
	27. Text addition in Section 3.3.3	Screens out for AA
	28. Amendment Section 3.3.3	Screens out for AA
	28. Amend paragraph 4 in Section 3.3.9	Screens in for AA
	30. Amendment Section 3.4.1	Screens out for AA
	31. Amendment Table 3.2	Screens out for AA
	32. Amendment Table 3.3	Screens out for AA
	33. Amend Policy W City Retail 08	Screens out for AA
	34. Amend Policy W City 19	Screens out for AA
	35. Amend Policy W City 20	Screens out for AA
	36. Amend Policy W City 26	Screens out for AA
Chapter 4- Economy, Education and Retail	37. Amend Strategic Objective 4.	No potential for significant effects on the conservation objectives for the qualifying interests of the Natura 2000 Network. Screens out for AA
	38. Amend Section 4.0	Screens out for AA
	39. Amend Section 4.4	
	40. Amend ECON 01	Screens out for AA

	41. Amend ECON 03	Screens out for AA
	42. Amend ECON 04	Screens out for AA
	43. Amend ECON 06	Screens out for AA
	44. Amend ECON 09	Screens out for AA
	45. Amendment to Section 4.7	Screens out for AA
	46. Amend ECON 12	Screens out for AA
	47. Amend ECON 13	Screens out for AA
	48. Amend ECON 14	Screens out for AA
	49. Amend ECON 17	Proposed SIFP will be subject to AA and SEA Screening as part of the plan making process. Screens out for AA
	50. Amendment to Section 4.8	Screens out for AA
	51. Amend ECON 19	Screens out for AA
	52. Amendment to Section 4.9	Screens out for AA
	53. Amend paragraph 11 of Section 4.10 Tourism and amend new Policy Objective ECON 22 'Tourism Accommodation/ Camp Sites' including; To maximise the potential of Waterford as a cruise ship destination.	Potential for significant effects on the conservation objectives for the qualifying interests of River Suir SAC and River Nore/Barrow (Waterford Estuary) SAC cannot be ruled out. Screens in for AA.
	54. Amendment to Section 4.11	Screens out for AA
	55. Amend EDU02	Screens out for AA
	56. Amend EDU03	Screens out for AA
	57. Amendment to Section 4.12	Screens out for AA
	58. Amend Table 4.1	Screens out for AA
	59. Amended Policy Objective Retail 02	Screens out for AA
	60. Additional Policy Objective Retail 06 'Retail Impact'	Screens out for AA
Chapter 5- Transport and Mobility	61. Amend Transport and Mobility Strategic Objectives No.3	Screens out for AA
	62. Amend Policy Objective Trans 01	Screens out for AA
	63. Amend paragraph 2 of Section 5.2	Screens out for AA
	64. Amend Section 5.2 re County Transport Plan	Screens out for AA
	65. Amend Policy Objective Trans 04	Screens out for AA
	66. Amend Policy Objective Trans 06	Screens out for AA
	67. Amend Section 5.4 'Achieving Modal Change'	Screens out for AA

	68. Amend Policy Objective Trans 09	Screens out for AA
	69. Amend Transport Mode Table	Screens out for AA
	70. Amend Policy Objective Trans 14	Screens out for AA
	71. Amend Policy Objective Trans 22	Screens out for AA
	72. Amend Policy Objective Trans 23	Screens out for AA
	73. Text changes to paragraph 2 of Section 5.9	Screens out for AA
	74. Amend Policy Objective Trans 46	Screens out for AA
	75. Amend Policy Objective Trans 50	Screens out for AA
	76. Amend Policy Objective Trans 54	Screens out for AA
Chapter 6- Utilities, Infrastructure, Energy and Communication	77. Amend and update Table 6.0 Existing Water Services Infrastructural Capacities	Screens out for AA
	78. Amend paragraph 4 in Section 6.4 'Energy'	Screens in for AA
	79. Amend Section 6.6 'Renewable Energy'	Screens in for AA
	80. Amend Section 6.8 ' Waste Services/ Infrastructure'	Screens out for AA
	80. Amend Policy Objective UTL 06	Screens out for AA
	81. Amend Policy Objective UTL 08 'Protection of Water Resources'	Screens out for AA
	82. Amend Policy Objective UTL 09	Screens out for AA
	83. Amend Policy Objective UTL 10 'Flooding/ SFRA	Screens out for AA
	84. Amend Policy Objective UTL 13 'Renewable Energy'	All renewable energy proposals will be subject to AA Screening at project level. Proposed decommissioning and restoration plan including habitat restoration may provide positive opportunities for biodiversity. Screens out for AA at plan level.
	85. Amend Policy Objective UTL 14	Screens out for AA
	86. Amend Policy Objective UTL 16	Screens out for AA
	87. Amend Policy Objective UTL 17	Screens out for AA
88. Amend Policy Objective UTL 21	Screens out for AA	

	89. Insert a new Policy Objective UTL 24	Screens out for AA
Chapter 7-Housing and Sustainable Communities	90 Amend Policy H 01	Screens out for AA
	91 Amend Section 7.1 and Policy Objective H05	No potential for significant effects on the conservation objectives of the Natura 2000 Network. Screens out for AA.
	92 Amend Section 7.3	Screens out for AA
	93 Amend Policy H12	Screens out for AA
	94 Amend Section 7.6	Screens out for AA
	95 Amend Policy H17	Screens out for AA
	96 Amend Policy H18	Screens out for AA
	97 Amend Policy H20	Screens out for AA
	98 Add additional Policy Objective after H22	Screens out for AA
	99 Amend Section 7.11	Screens out for AA
	100 Amend Section 7.11.2	Screens out for AA
	101. Amend paragraph 2 of Section 7.18	Screens out for AA
	102 Amend paragraph Section 7.25	Screens out for AA
	103 Amend Section 7.26	Screens out for AA
	104 Amend Policy SC 03	Screens out for AA
	105 Amend Policy SC06	Screens out for AA
	106 Amend Policy SC09	Screens out for AA
	107 Amend Policy SC15	Screens out for AA
	108 Amend Policy SC 26	Screens out for AA
	109 Amend Policy SC 27	Screens out for AA
	110 Amend Policy SC30	Screens out for AA
	111 Amend Policy SC31	Screens out for AA
	112 Amend Policy SC33	Screens out for AA
	113 Amend Policy SC36	All access proposals will be subject to AA Screening at project level. Policy includes “subject to the Birds and Habitats Directives”. Screens out for AA at plan level.
	114 Amend Policy SC41	Screens out for AA
Chapter 8-Placemaking	115 Amend Policy Place 10	Screens out for AA
	116 Amend Policy Place 17	Screens out for AA
	117 Amend Policy Place 26	Screens out for AA
Chapter 9-Climate Action, Biodiversity and Environment	118 Amend Policy CA01	Screens out for AA
	119 Amend Policy BD02	Screens out for AA
Chapter 10- Landscape	120 Amend Section 10.1	Screens out for AA
	121 Amend policies C&M 01	Screens out for AA
	122 Amend policies C&M03	Screens out for AA
	123 Amend Policy G02	Screens out for AA
	124 Amend Policy Objective BGI 06	Screens in for AA
	125 Amend Policy BGI09	Screens out for AA

	126 Amend paragraph 1 of Section 10.4	Screens out for AA
	127 Amend Table 10.0 'Waterford Trails'	Screens out for AA
	128 Amend Policy BGI 10	Screens in for AA
	129 Amend 'Amenity Management Policy Objectives' in Section 10.5	Screens in for AA
Chapter 11- Heritage	130 Amend Section 11.5 addition of new policy on EcIA	Screens out for AA
	131 Additional text on industrial heritage	Screens out for AA
	132 Amend Section 11.17 'Archaeology'	Screens out for AA
	133 Amend Policy AH 03	Screens out for AA
	134 Amend Policy AH 04	Screens out for AA
	135 Amend Policy AH 05	Screens out for AA
	136 Amend Section 11.20 'Historic Graveyards	Screens out for AA
	137 Amend Chapter 11 by adding an additional section entitled 'Community Archaeology' with associated Policy Objective AH09 & AH10	Screens out for AA
	138 Additional section titled 'Underwater Archaeology'	Screens out for AA
Development Management Standards	139 Amend General Density Text Section 3.2	Screens out for AA
	140 Amend Objective DM05	Screens out for AA
	141 Amend Text Section 3.3	Screens out for AA
	142 Amend Text within Table	Screens out for AA
	143 Amend Section 4.1 'Naming of Residential Developments	Screens out for AA
	144 Amend text Paragraph 1 of Section 5.24	Screens out for AA
	145 Text addition	Screens out for AA
	146 Amend Objective DM 16	Screens out for AA
	147 Amend text Section 6.4	Screens out for AA
	148 Amend Objective DM 34	Screens out for AA
	149 Insert Objective DM 35	Screens out for AA
	150 Amend Table 5	Screens out for AA
	151 Amend Objective DM 37	Screens out for AA
	152 Amend Section 9.4	Screens out for AA
	153 Amend Option 3 of Section 9.4	Screens out for AA
	154 Amend Objective DM 53	Screens out for AA
	155 Amend Section 11.2	Extension of durations on extant permissions will be subject AA screening the DM

		level. Screens out for AA at plan level.
	156 Amend Section 11.3	Screens out for AA
	157 Update Table 10	Screens out for AA
	158 Update Table 11	Screens out for AA
Appendix 2 Dev Objectives	159 Additional General Policy Objective	Screens out for AA
	160 Ardmore D011,D012, D013	Screens out for AA
	161 Cappoquin CPDO9	Screens in for AA
	162 Cappoquin CPDO10	Screens out for AA
	163 Clonmel CLW04	Screens out for AA +ive
	163 Clonmel CLW05	Screens out for AA
	163 Clonmel CLW06	Screens in for AA
	164 Dungarvan DGD06	Screens out for AA
	165 Dungarvan DGDO15-21	Screens out for AA
	166 Dunmore East DMDO12-DMDO15	Screens out for AA
	167 Gaeltacht GDDO08	Screens out for AA
	168 Kill KLDO4-KLDO6	Screens out for AA
	169 Lemybrien LBKDO5	Screens out for AA
	169 Passage East PECD10	Screens out for AA
	171 Piltown PKD02	Screens out for AA
	172 Portlaw PLD09	Screens out for AA
	173 Tallow TWDO12 & 13	Screens out for AA
	174 Tramore TRDO12 & 13	Screens out for AA
	175 Waterford City DO18-33	Screens out for AA
	WCD029	Uncertain potential for significant effects on the conservation objectives for the qualifying interests of River Suir SAC from increase discharge of surface water to combined storm water outfall. Screens in for AA
	WCD032	Uncertain potential for significant effects on the conservation objectives for the qualifying interests of River Suir SAC from increase discharge of surface water to combined storm water outfall. Screens in for AA
	176 Amend Map 3	Screens out for AA
Appendix 7	177 Amend Appendix 2	Screens out for AA
Appendix 9 RPS	178-179 Deletions to the RPS	Screens out for AA
Appendix 11	180 Additions to TPOs	Screens out for AA
	181 Amendments to list of GH sites	Screens out for AA
	182 Listing of St. John's College Wood as a Site of Local Biodiversity Interest	Screens out for AA

Appendix 12 Airport Masterplan	183 Insertion of text in Section 1.3	Screens out for AA
Appendix 14 Infrastructure Capacity	184 Amend Section 2.2	Screens out for AA
Appendix 17	185 Summary table insertion	Screens out for AA
Appendix 19	186 Amendments to list of GH sites in SEA ER	Screens out for AA
Appendix 21	187 Regeneration and Opportunity Sites	
	AOS1 Perks Site	Screens out for AA
	BOS1 Ballyduff	Screens in for AA
	BYOS1	Screens out for AA
	BUOS1	Screens out for AA
	COS1	Screens out for AA
	KMOS1	Screens out for AA
	KMOS2	Screens out for AA
	KOS1	Screens out for AA
	POS1	Screens out for AA
	ROS1	Screens out for AA
	TOS1	Screens out for AA
	TOS2	Screens out for AA
	LOPSO1	Screens out for AA
	LOPSO2	Screens out for AA
	LOPSO3	Screens out for AA
	DUOS1	Screens out for AA
	PTOSO1	Screens in for AA
	TROSO1	Screens out for AA
	TROSO2	Screens out for AA
	TROSO3	Screens out for AA
	TROSO4	Screens out for AA
	TROSO5	Screens out for AA
	TROSO6	Screens out for AA
	TROSO7	Screens out for AA
	DTOSO1	Screens out for AA
	DTOSO2	Screens out for AA
	DTOSO3	Screens out for AA
	DTOSO4	Screens out for AA
	DTOSO5	Screens out for AA
	DTOSO6	Screens out for AA
	OPSO1	Screens out for AA
	OPSO2	Screens out for AA
	OPSO3	Screens out for AA
	OPSO4	Screens out for AA
	OPSO5	Screens out for AA
	OPSO6	Screens in for AA
	OPSO7	Screens out for AA
	OPSO8	Screens out for AA
	OPSO9	Screens in for AA
	OPS10	Screens out for AA
	OPS11	Screens out for AA
	OPS12	Screens out for AA
	OPS13	Screens out for AA
	OPS14	Screens out for AA

	OPS15	Screens out for AA
	OPS16	Screens out for AA
	OPS17	Screens in for AA
	OPS18	Screens out for AA
	OPS19	Screens in for AA
	OPS20	Screens out for AA
	OPS21	Screens out for AA
	OPS22	Screens out for AA
	OPS23	Screens out for AA
	OPS24	Screens out for AA
	OPS25	Screens out for AA
	OPS26	Screens out for AA
	OPS27	Screens out for AA
	OPS28	Screens out for AA
	OPS29	Screens out for AA
	OPS30	Screens out for AA
Appendix 22	Inclusion of RMP as Appendix to Plan	Screens out for AA

Appendix 2 Screening of Land Use Zonings to Draft Plan

UID	Location	Amendment	AA
1	Carrick on Suir	HA	Screens out for AA
3717	Portlaw	HA	Screens out for AA
3718	Portlaw	SRR	Screens out for AA
3041	Portlaw	HA	Screens out for AA
3044	Portlaw	HA	Screens out for AA
3720	Portlaw	R1	Screens out for AA
3680	Portlaw	R1	Screens out for AA
3551	Portlaw	HA	Screens out for AA
3549	Portlaw	HA	Screens out for AA
3242	Portlaw	SRR	Screens out for AA
3049	Portlaw	HA	Screens out for AA

2932	Portlaw	RS	Screens out for AA
3446	Portlaw	RS	Screens out for AA
3683	Portlaw	RS	Screens out for AA
3042	Portlaw	HA	Screens out for AA
722	Portlaw	RS	Screens out for AA
857	Portlaw	HA	Screens out for AA
3685	Portlaw	R1	Screens out for AA
3687	Portlaw	R1	Screens out for AA
3241	Portlaw	SRR	Screens out for AA
3619	Greenway Manor Hotel	TM	Screens out for AA
3709	Butlerstown	CI	Screens out for AA
3626	Waterford Industrial Estate	GB	Screens out for AA
3375	Ballybeg	R1	Screens out for AA
3691	Ballybeg	HA	Screens out for AA
3312	Ballybeg	CI	Screens out for AA
3598	Ballybeg	CI	Screens out for AA
3369	Kilbarry	R1	Screens out for AA
3582	Carrigrod	RS	Screens out for AA
3579	Carrigrod	RS	Screens out for AA
3709	Carrigrod	R1	Screens out for AA
3711	Carrigrod	R1	Screens out for AA
3498	Lisduggan	R1	Screens out for AA
2978	Watersgate	R1	Screens out for AA
3583	Carrickphierish	RS	Screens out for AA
3584	Carrickphierish	R1	Screens out for AA
3585	Carrickphierish	R1	Screens out for AA
3587	Gibbethill	HA	Screens out for AA
3469	Gibbethill	HA	Screens out for AA
3467	Gibbethill	HA	Screens out for AA
3494	Logloss	CI	Screens out for AA
3470	Gibbethill	OS	Screens out for AA
3495	Rathfadden	RS	Screens out for AA
3498	Lisduggan	R1	Screens out for AA
3500	Christendom	R1	Screens out for AA
3530	Waterford City	TC	Screens out for AA
3523	Waterford City	TC	Screens out for AA
2285	Ballynakill	OS	Screens out for AA
3522	Williamstown	TM	Screens out for AA
3540	Kilcohan	R1	Screens out for AA
3545	Williamstown	GB	Screens out for AA
359	Grantstown	R1	Screens out for AA
3706	Islandview	R1	Screens in for AA
1537	Knockboy	R1	Screens in for AA
3573	Knockboy	SRR	Screens out for AA Long term residential zoning
3701	Ballygunner	OS	Screens out for AA
3613	Ballygunner	OS	Screens out for AA
3690	Grantstown	RS	Screens out for AA
3570	Blenheim	HA	Screens out for AA
3712	Blenheim	HA	Screens out for AA

3631	Crooke	RV	Screens in for AA
3633	Crooke	RV	Screens out for AA
3700	Crooke	RV	Screens out for AA
2993	Dunmore East	HA	Screens out for AA
3639	Dunmore East	HA	Screens out for AA
3637	Dunmore East	RE	Screens out for AA
3636	Dunmore East	HA	Screens out for AA
574	Dunmore East	RS	Screens out for AA
2993	Dunmore East	HA	Screens out for AA
3284	Dunmore East	HA	Screens out for AA
3292	Dunmore East	HA	Screens out for AA
3502	Dunmore East	RS	Screens out for AA
3501	Dunmore East	SRR	Screens out for AA
3293	Dunmore East	SRR	Screens out for AA
3282	Dunmore East	R1	Screens out for AA
3547	Dunmore East	R1	Screens out for AA
3504	Dunmore East	TM	Screens out for AA
3518	Dunmore East	TM	Screens out for AA
3000	Dunmore East	HA	Screens out for AA
3002	Dunmore East	HA	Screens out for AA
3647	Dunmore East	RS	Screens out for AA
3635	Dunmore East	CI	Screens out for AA
3267	Dunmore East	HA	Screens out for AA
3012	Dunmore East	R1	Screens out for AA
3510	Dunmore East	R1	Screens out for AA
652	Tramore	RE	Screens out for AA
2196	Tramore	RE	Screens out for AA
1748	Tramore	HA	Screens out for AA
3089	Tramore	RE	Screens out for AA
3594	Tramore	OS	Screens out for AA
3515	Tramore	RS	Screens out for AA
3592	Tramore	TM	Screens in for AA
3532	Tramore	TC	Screens out for AA
3533	Tramore	TC	Screens out for AA
3519	Tramore	RS	Screens out for AA
3506	Tramore	RS	Screens out for AA
3512	Tramore	RS	Screens out for AA
3557	Tramore	HA	Screens out for AA
3069	Tramore	HA	Screens out for AA
3068	Tramore	SRR	Screens out for AA
3066	Tramore	HA	Screens out for AA
3555	Tramore	HA	Screens out for AA
3063	Tramore	HA	Screens out for AA
3064	Tramore	HA	Screens out for AA
3061	Tramore	HA	Screens out for AA
3060	Tramore	HA	Screens out for AA
3406	Tramore	RS	Screens out for AA
3496	Tramore	R1	Screens out for AA
3089	Tramore	RE	Screens out for AA
3660	Tramore	CI	Screens out for AA
3659	Tramore	RS	Screens out for AA
3383	Tramore	R1	Screens out for AA

3384	Tramore	R1	Screens out for AA
3074	Tramore	RS	Screens out for AA
3067	Tramore	HA	Screens out for AA
651	Tramore	RE	Screens out for AA
3066	Tramore	HA	Screens out for AA
3406	Tramore	RS	Screens out for AA
3643	Tramore	RE	Screens out for AA
3406	Tramore	RS	Screens out for AA
3535	Tramore	RE	Screens out for AA
3065	Tramore	HA	Screens out for AA
3552	Tramore	HA	Screens out for AA
3660	Tramore	CI	Screens out for AA
3520	Tramore	HA	Screens out for AA
3526	Tramore	RE	Screens out for AA
3528	Tramore	RE	Screens out for AA
56	Cloncoskoran	CI	Screens out for AA
66	Ballinroad	HA	Screens out for AA
132	Ballinroad	HA	Screens out for AA
108	Ballinroad	HA	Screens out for AA
3665	Ballinroad	HA	Screens out for AA
3673	Ballynacourty	TM	Screens out for AA
922	Ballynacourty	TM	Screens out for AA
3666	Ballinroad	R1	Screens out for AA
3664	Dungarvan	HA	Screens out for AA
3670	Dungarvan	SRR	Screens out for AA
3669	Dungarvan	R1	Screens out for AA
3653	Dungarvan	SRR	Screens out for AA
90	Dungarvan	R1	Screens out for AA
3589	Dungarvan	R1	Screens out for AA
117	Dungarvan	SRR	Screens out for AA
3417	Dungarvan	RS	Screens out for AA
3488	Dungarvan	R1	Screens out for AA
3252	Dungarvan	SRR	Screens out for AA
3250	Dungarvan	R1	Screens out for AA
3651	An Rinn	R1	Screens out for AA
3604	An Rinn	RS	Screens out for AA
3492	An Rinn	RS	Screens out for AA
3601	An Rinn	CI	Screens out for AA
3569	An Rinn	RS	Screens out for AA
3491	An Rinn	RS	Screens out for AA
3604	An Rinn	RS	Screens out for AA
3536	An Rinn	RS	Screens out for AA
3538	An Rinn	R1	Screens out for AA
3567	An Rinn	R1	Screens out for AA
3493	An Rinn	RS	Screens out for AA
3607	Ardmore	RV	Screens out for AA
3618	Ardmore	RV	Screens out for AA
3738	Cappoquin	RV	Screens out for AA
3561	Lismore	HA	Screens out for AA
3562	Lismore	SRR	Screens out for AA
509	Lismore	HA	Screens out for AA
518	Lismore	HA	Screens out for AA
498	Lismore	HA	Screens out for AA

3053	Lismore	HA	Screens out for AA
3054	Lismore	HA	Screens out for AA
3559	Lismore	HA	Screens out for AA
3688	Tallow	RV	Screens out for AA
3742	Clonmel	SRR	Lands are within a flood zone within catchment of River Suir. Uncertain potential for significant effects on the conservation objectives for the qualifying interests of River Suir SAC. Screens in for AA
3697	Clonmel	RS	Screens out for AA
3674	Kilmacthomas	RV	Screens out for AA
3675	Lemybrien	RV	Screens out for AA
3606	Old Parish	SRR	Screens out for AA
3588	Old Parish	R1	Screens out for AA